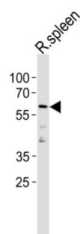


Cyclin-L2 (CCNL2) Antibody

Catalogue No.: abx034862



Cyclin-L2 (CCNL2) Antibody is a Rabbit Polyclonal for the detection of CCNL2. CCNL2 is a transcriptional regulator which participates in regulating the pre-mRNA splicing process. Also modulates the expression of critical apoptotic factor, leading to cell apoptosis (By similarity).

Target: Cyclin-L2 (CCNL2)

Clonality: Polyclonal

Reactivity: Rat

Tested Applications: ELISA, WB

Host: Rabbit

Recommended dilutions: WB: 1/1000. Optimal dilutions/concentrations should be determined by the end user.

Conjugation: Unconjugated

Immunogen: KLH-conjugated synthetic peptide between 422-450 amino acids from the C-terminal region of rat Ccnl2.

Isotype: IgG

Form: Liquid

Purification: Purified through a protein A column, followed by peptide affinity purification.

Storage: Aliquot and store at -20°C. Avoid repeated freeze/thaw cycles.

UniProt Primary AC: Q5I0H5 ([UniProt](#), [ExPASy](#))

NCBI Accession: NP_001013112.1

Datasheet

Version: 2.0.0

Revision date: 15 Aug 2025



KEGG: rno:298686

String: [10116.ENSRNOP00000025531](#)

Molecular Weight: Calculated MW: 58.2 kDa

Buffer: PBS containing 0.09% sodium azide.

Specificity: Predicted to react with Mouse Ccnl2.

Note: THIS PRODUCT IS FOR RESEARCH USE ONLY. NOT FOR USE IN DIAGNOSTIC, THERAPEUTIC OR COSMETIC PROCEDURES. NOT FOR HUMAN OR ANIMAL CONSUMPTION.

For Reference Only