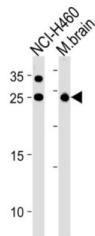


RAB3C, Member RAS Oncogene Family (RAB3C) Antibody

Catalogue No.: abx034865



Protein transport. Probably involved in vesicular traffic (By similarity).

Target:	RAB3C, Member RAS Oncogene Family (RAB3C)
Clonality:	Polyclonal
Reactivity:	Human, Mouse
Tested Applications:	ELISA, WB
Host:	Rabbit
Recommended dilutions:	WB: 1/1000. Optimal dilutions/concentrations should be determined by the end user.
Conjugation:	Unconjugated
Immunogen:	KLH-conjugated synthetic peptide between 136-164 amino acids from the Central region of human RAB3C.
Isotype:	IgG
Form:	Liquid
Purification:	Purified through a protein A column, followed by peptide affinity purification.
Storage:	Aliquot and store at -20°C. Avoid repeated freeze/thaw cycles.
UniProt Primary AC:	Q96E17 (UniProt , ExPASy)
NCBI Accession:	NP_612462.1
KEGG:	hsa:115827

Datasheet

Version: 2.0.0

Revision date: 26 Aug 2025



String: [9606.ENSF00000282878](#)

Molecular Weight: Calculated MW: 26 kDa

Buffer: PBS containing 0.09% sodium azide.

Specificity: Predicted to react with Cow RAB3C.

Note: THIS PRODUCT IS FOR RESEARCH USE ONLY. NOT FOR USE IN DIAGNOSTIC, THERAPEUTIC OR COSMETIC PROCEDURES. NOT FOR HUMAN OR ANIMAL CONSUMPTION.

For Reference Only