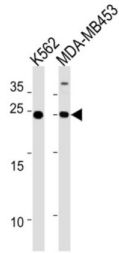
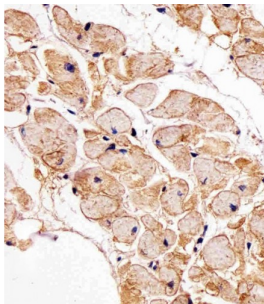


Sarcospan (SSPN) Antibody

Catalogue No.: abx034867



WB analysis of K562 and MDA-MB453 cell line lysates (35 µg/lane), using SSPN antibody.



IHC-P analysis of human heart, with DAB staining, using SSPN antibody (1/25 dilution).

This product is currently in development. The lead time for this product may be several months. Please contact us at info@abbexa.com for an updated lead time before purchasing this product.

SSPN is a component of the dystrophin-glycoprotein complex (DGC), a complex that spans the muscle plasma membrane and forms a link between the F-actin cytoskeleton and the extracellular matrix. Preferentially associates with the sarcoglycan subcomplex of the DGC.

Target: Sarcospan (SSPN)

Clonality: Polyclonal

Reactivity: Human

Tested Applications: ELISA, WB, IHC

Host: Rabbit

Recommended dilutions: WB: 1/1000, IHC-P: 1/100 - 1/500. Not tested in IHC-F. Optimal dilutions/concentrations should be determined by the end user.

Conjugation: Unconjugated

Immunogen: KLH-conjugated synthetic peptide between 6-34 amino acids from the N-terminal region of human SSPN.

Datasheet

Version: 5.0.0
Revision date: 22 Dec 2025



Isotype:	IgG
Form:	Liquid
Purification:	Purified through a protein A column, followed by peptide affinity purification.
Storage:	Aliquot and store at -20°C. Avoid repeated freeze/thaw cycles.
UniProt Primary AC:	Q14714 (UniProt , ExPASy)
Gene Symbol:	SSPN
NCBI Accession:	NP_001129295.1, NP_005077.2
KEGG:	hsa:8082
String:	9606.ENSP00000242729
Molecular Weight:	Calculated MW: 26.6 kDa
Buffer:	PBS containing 0.09% sodium azide.
Note:	THIS PRODUCT IS FOR RESEARCH USE ONLY. NOT FOR USE IN DIAGNOSTIC, THERAPEUTIC OR COSMETIC PROCEDURES. NOT FOR HUMAN OR ANIMAL CONSUMPTION.