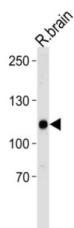


Calcium/Calmodulin Dependent Serine Protein Kinase (CASK) Antibody

Catalogue No.: abx034882



Multidomain scaffolding protein with a role in synaptic transmembrane protein anchoring and ion channel trafficking. Contributes to neural development and regulation of gene expression via interaction with the transcription factor TRB1. Binds to cell-surface proteins, including amyloid precursor protein, neuroligins, and syndecans. May mediate a link between the extracellular matrix and the actin cytoskeleton via its interaction with syndecan and with the actin/spectrin-binding protein 4.1.

Target: Calcium/Calmodulin Dependent Serine Protein Kinase (CASK)

Clonality: Polyclonal

Reactivity: Rat

Tested Applications: ELISA, WB

Host: Rabbit

Recommended dilutions: WB: 1/1000. Optimal dilutions/concentrations should be determined by the end user.

Conjugation: Unconjugated

Immunogen: KLH-conjugated synthetic peptide between 589-616 amino acids from the Central region of rat Cask.

Isotype: IgG

Form: Liquid

Purification: Purified through a protein A column, followed by peptide affinity purification.

Storage: Aliquot and store at -20°C. Avoid repeated freeze/thaw cycles.

UniProt Primary AC: Q62915 ([UniProt](#), [ExPASy](#))

Datasheet

Version: 2.0.0

Revision date: 13 Aug 2025



NCBI Accession: NP_071520.1

KEGG: rno:29647

String: [10116.ENSRNOP00000004187](#)

Molecular Weight: Calculated MW: 103 kDa

Buffer: PBS containing 0.09% sodium azide.

Specificity: Predicted to react with Human, Mouse Cask.

Note: THIS PRODUCT IS FOR RESEARCH USE ONLY. NOT FOR USE IN DIAGNOSTIC, THERAPEUTIC OR COSMETIC PROCEDURES. NOT FOR HUMAN OR ANIMAL CONSUMPTION.

For Reference Only