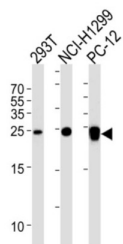


Ubiquitin Carboxyl Terminal Hydrolase L1 (UCHL1) Antibody

Catalogue No.: abx034898



Ubiquitin-protein hydrolase involved both in the processing of ubiquitin precursors and of ubiquitinated proteins. This enzyme is a thiol protease that recognizes and hydrolyzes a peptide bond at the C-terminal glycine of ubiquitin. Also binds to free monoubiquitin and may prevent its degradation in lysosomes. The homodimer may have ATP-independent ubiquitin ligase activity.

| | |
|-------------------------------|---|
| Target: | Ubiquitin Carboxyl Terminal Hydrolase L1 (UCHL1) |
| Clonality: | Monoclonal |
| Reactivity: | Human, Rat |
| Tested Applications: | ELISA, WB, IHC |
| Host: | Mouse |
| Recommended dilutions: | WB: 1/1000, IHC-P: 1/25. Not tested in IHC-F. Optimal dilutions/concentrations should be determined by the end user. |
| Conjugation: | Unconjugated |
| Immunogen: | KLH-conjugated synthetic peptide selected from the 185-214 region of human UCHL1. |
| Isotype: | IgG ₁ |
| Form: | Liquid |
| Purification: | Purified through a protein G column, eluted with high and low pH buffers and neutralized immediately, followed by dialysis against PBS. |
| Storage: | Aliquot and store at -20°C. Avoid repeated freeze/thaw cycles. |
| UniProt Primary AC: | P09936 (UniProt , ExPASy) |
| NCBI Accession: | NP_004172.2 |

Datasheet

Version: 3.0.0

Revision date: 07 Sep 2025



KEGG: hsa:7345

String: [9606.ENSP00000284440](#)

Molecular Weight: Calculated MW: 24.8 kDa

Buffer: PBS containing 0.09% sodium azide.

Specificity: Predicted to react with Mouse, Cow, Pig, Horse and Monkey UCHL1.

Note: THIS PRODUCT IS FOR RESEARCH USE ONLY. NOT FOR USE IN DIAGNOSTIC, THERAPEUTIC OR COSMETIC PROCEDURES. NOT FOR HUMAN OR ANIMAL CONSUMPTION.

For Reference Only