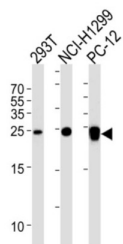


Ubiquitin Carboxyl Terminal Hydrolase L1 (UCHL1) Antibody

Catalogue No.: abx034898



Ubiquitin-protein hydrolase involved both in the processing of ubiquitin precursors and of ubiquitinated proteins. This enzyme is a thiol protease that recognizes and hydrolyzes a peptide bond at the C-terminal glycine of ubiquitin. Also binds to free monoubiquitin and may prevent its degradation in lysosomes. The homodimer may have ATP-independent ubiquitin ligase activity.

Target:	Ubiquitin Carboxyl Terminal Hydrolase L1 (UCHL1)
Clonality:	Monoclonal
Reactivity:	Human, Rat
Tested Applications:	ELISA, WB, IHC
Host:	Mouse
Recommended dilutions:	WB: 1/1000, IHC-P: 1/25. Not tested in IHC-F. Optimal dilutions/concentrations should be determined by the end user.
Conjugation:	Unconjugated
Immunogen:	KLH-conjugated synthetic peptide selected from the 185-214 region of human UCHL1.
Isotype:	IgG ₁
Form:	Liquid
Purification:	Purified through a protein G column, eluted with high and low pH buffers and neutralized immediately, followed by dialysis against PBS.
Storage:	Aliquot and store at -20°C. Avoid repeated freeze/thaw cycles.
UniProt Primary AC:	P09936 (UniProt , ExPASy)
NCBI Accession:	NP_004172.2

Datasheet

Version: 3.0.0

Revision date: 16 Mar 2025



KEGG: hsa:7345

String: [9606.ENSP00000284440](#)

Molecular Weight: Calculated MW: 24.8 kDa

Buffer: PBS containing 0.09% sodium azide.

Specificity: Predicted to react with Mouse, Cow, Pig, Horse and Monkey UCHL1.

Note: THIS PRODUCT IS FOR RESEARCH USE ONLY. NOT FOR USE IN DIAGNOSTIC, THERAPEUTIC OR COSMETIC PROCEDURES. NOT FOR HUMAN OR ANIMAL CONSUMPTION.

For Reference Only