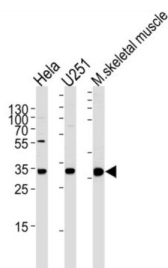


RNA Polymerase II Subunit C (POLR2C) Antibody

Catalogue No.: abx034956



DNA-dependent RNA polymerase catalyzes the transcription of DNA into RNA using the four ribonucleoside triphosphates as substrates. Component of RNA polymerase II which synthesizes mRNA precursors and many functional non-coding RNAs. Pol II is the central component of the basal RNA polymerase II transcription machinery. It is composed of mobile elements that move relative to each other. RPB3 is part of the core element with the central large cleft and the clamp element that moves to open and close the cleft (By similarity).

Target:	RNA Polymerase II Subunit C (POLR2C)
Clonality:	Polyclonal
Reactivity:	Human, Mouse
Tested Applications:	ELISA, WB, IHC, IF/ICC
Host:	Rabbit
Recommended dilutions:	WB: 1/1000, IHC-P: 1/100, IF/ICC: 1/25. Not tested in IHC-F. Optimal dilutions/concentrations should be determined by the end user.
Conjugation:	Unconjugated
Immunogen:	KLH-conjugated synthetic peptide between 200-228 amino acids from the C-terminal region of human POLR2C.
Isotype:	IgG
Form:	Liquid
Purification:	Purified through a protein A column, followed by peptide affinity purification.
Storage:	Aliquot and store at -20°C. Avoid repeated freeze/thaw cycles.
UniProt Primary AC:	P19387 (UniProt , ExPASy)

Datasheet

Version: 3.0.0

Revision date: 13 Aug 2025



Gene Symbol: POLR2C

NCBI Accession: NP_116558.1

KEGG: hsa:5432

String: [9606.ENSP00000219252](#)

Molecular Weight: Calculated MW: 31.4 kDa

Buffer: PBS containing 0.09% sodium azide.

Specificity: Predicted to react with Cow POLR2C.

Note: THIS PRODUCT IS FOR RESEARCH USE ONLY. NOT FOR USE IN DIAGNOSTIC, THERAPEUTIC OR COSMETIC PROCEDURES. NOT FOR HUMAN OR ANIMAL CONSUMPTION.

For Reference Only