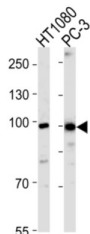


Zinc Finger Protein 560 (ZNF560) Antibody

Catalogue No.: abx034987



This product is currently in development. The lead time for this product may be several months. Please contact us at info@abbexa.com for an updated lead time before purchasing this product.

This product is currently in development. The lead time for this product may be several months. Please contact us at info@abbexa.com for an updated lead time before purchasing this product.

May be involved in transcriptional regulation.

Target:	Zinc Finger Protein 560 (ZNF560)
Clonality:	Polyclonal
Reactivity:	Human
Tested Applications:	ELISA, WB
Host:	Rabbit
Recommended dilutions:	WB: 1/1000. Optimal dilutions/concentrations should be determined by the end user.
Conjugation:	Unconjugated
Immunogen:	KLH-conjugated synthetic peptide between 301-325 amino acids from the Central region of human ZNF560.
Isotype:	IgG
Form:	Liquid
Purification:	Purified through a protein A column, followed by peptide affinity purification.
Storage:	Aliquot and store at -20°C. Avoid repeated freeze/thaw cycles.

Datasheet

Version: 3.0.0

Revision date: 29 Aug 2025



UniProt Primary AC: Q96MR9 ([UniProt](#), [ExPASy](#))

Gene Symbol: ZNF560

NCBI Accession: NP_689689.2

KEGG: hsa:147741

String: [9606.ENSP00000301480](#)

Molecular Weight: Calculated MW: 91.1 kDa

Buffer: PBS containing 0.09% sodium azide.

Note: THIS PRODUCT IS FOR RESEARCH USE ONLY. NOT FOR USE IN DIAGNOSTIC, THERAPEUTIC OR COSMETIC PROCEDURES. NOT FOR HUMAN OR ANIMAL CONSUMPTION.

For Reference Only