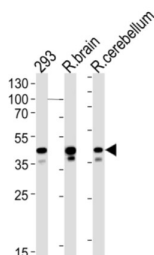


Casein Kinase II Subunit Alpha (CSNK2A1) Antibody

Catalogue No.: abx034988



Casein Kinase II Subunit Alpha (CSNK2A1) Antibody is a Rabbit Polyclonal for the detection of CSNK2A1. The target is a catalytic subunit of a constitutively active serine/threonine-protein kinase complex that phosphorylates a large number of substrates containing acidic residues C-terminal to the phosphorylated serine or threonine. Regulates numerous cellular processes, such as cell cycle progression, apoptosis and transcription, as well as viral infection. May act as a regulatory node which integrates and coordinates numerous signals leading to an appropriate cellular response.

Target:	Casein Kinase II Subunit Alpha (CSNK2A1)
Clonality:	Polyclonal
Reactivity:	Human, Rat
Tested Applications:	ELISA, WB
Host:	Rabbit
Recommended dilutions:	WB: 1/1000. Optimal dilutions/concentrations should be determined by the end user.
Conjugation:	Unconjugated
Immunogen:	KLH-conjugated synthetic peptide between 28-50 amino acids from the N-terminal region of Rat Csnk2a1.
Isotype:	IgG
Form:	Liquid
Purification:	Purified through a protein A column, followed by peptide affinity purification.
Storage:	Aliquot and store at -20°C. Avoid repeated freeze/thaw cycles.
UniProt Primary AC:	P19139 (UniProt , ExPASy)

Datasheet

Version: 2.0.0

Revision date: 17 Aug 2025



NCBI Accession: NP_446276.1

KEGG: rno:116549

String: [10116.ENSRNOP00000007558](#)

Molecular Weight: Calculated MW: 45.1 kDa

Buffer: PBS containing 0.09% sodium azide.

Specificity: Predicted to react with Mouse, Cow, Chicken, Rabbit, Drosophila, Xenopus and C. elegans Csnk2a1.

Note: THIS PRODUCT IS FOR RESEARCH USE ONLY. NOT FOR USE IN DIAGNOSTIC, THERAPEUTIC OR COSMETIC PROCEDURES. NOT FOR HUMAN OR ANIMAL CONSUMPTION.

For Reference Only