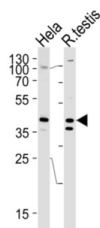


KH Domain-Containing, RNA-Binding, Signal Transduction-Associated Protein 2 (KHDRBS2) Antibody

Catalogue No.: abx034990



RNA-binding protein that plays a role in the regulation of alternative splicing and influences mRNA splice site selection and exon inclusion. Its phosphorylation by FYN inhibits its ability to regulate splice site selection. Induces an increased concentration-dependent incorporation of exon in CD44 pre-mRNA by direct binding to purine-rich exonic enhancer. May function as an adapter protein for Src kinases during mitosis. Binds both poly (A) and poly (U) homopolymers. Phosphorylation by PTK6 inhibits its RNA-binding ability (By similarity).

Target: KH Domain-Containing, RNA-Binding, Signal Transduction-Associated Protein 2 (KHDRBS2)

Clonality: Polyclonal

Reactivity: Human, Rat

Tested Applications: ELISA, WB

Host: Rabbit

Recommended dilutions: WB: 1/1000. Optimal dilutions/concentrations should be determined by the end user.

Conjugation: Unconjugated

Immunogen: KLH-conjugated synthetic peptide between 298-321 amino acids from the C-terminal region of human KHDRBS2.

Isotype: IgG

Form: Liquid

Purification: Purified through a protein A column, followed by peptide affinity purification.

Storage: Aliquot and store at -20°C. Avoid repeated freeze/thaw cycles.

UniProt Primary AC: Q5VWX1 ([UniProt](#), [ExPASy](#))

Datasheet

Version: 2.0.0

Revision date: 06 Oct 2025



NCBI Accession: NP_689901.2

KEGG: hsa:202559

String: [9606.ENSP00000281156](#)

Molecular Weight: Calculated MW: 38.9 kDa

Buffer: PBS containing 0.09% sodium azide.

Note: THIS PRODUCT IS FOR RESEARCH USE ONLY. NOT FOR USE IN DIAGNOSTIC, THERAPEUTIC OR COSMETIC PROCEDURES. NOT FOR HUMAN OR ANIMAL CONSUMPTION.

For Reference Only