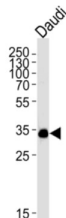


## POU Class 2 Associating Factor 1 (POU2AF1) Antibody

Catalogue No.: abx034996



Transcriptional coactivator that specifically associates with either OCT1 or OCT2. It boosts the OCT1 mediated promoter activity and to a lesser extent, that of OCT2. It has no intrinsic DNA-binding activity. It recognizes the POU domains of OCT1 and OCT2. It is essential for the response of B-cells to antigens and required for the formation of germinal centers.

**Target:** POU Class 2 Associating Factor 1 (POU2AF1)

**Clonality:** Monoclonal

**Reactivity:** Human

**Tested Applications:** ELISA, WB

**Host:** Mouse

**Recommended dilutions:** WB: 1/4000. Optimal dilutions/concentrations should be determined by the end user.

**Conjugation:** Unconjugated

**Immunogen:** Purified His-tagged Human POU2AF1 protein

**Isotype:** IgG<sub>1</sub> Kappa

**Form:** Liquid

**Purification:** Purified through a protein G column, eluted with high and low pH buffers and neutralized immediately, followed by dialysis against PBS.

**Storage:** Aliquot and store at -20°C. Avoid repeated freeze/thaw cycles.

**UniProt Primary AC:** Q16633 ([UniProt](#), [ExPASy](#))

**NCBI Accession:** NP\_006226.2

# Datasheet

Version: 5.0.0

Revision date: 30 Jul 2025



**KEGG:** hsa:5450

**String:** [9606.ENSP00000376786](#)

**Molecular Weight:** Calculated MW: 27.4 kDa

**Buffer:** PBS containing 0.09% sodium azide.

**Note:** THIS PRODUCT IS FOR RESEARCH USE ONLY. NOT FOR USE IN DIAGNOSTIC, THERAPEUTIC OR COSMETIC PROCEDURES. NOT FOR HUMAN OR ANIMAL CONSUMPTION.

For Reference Only