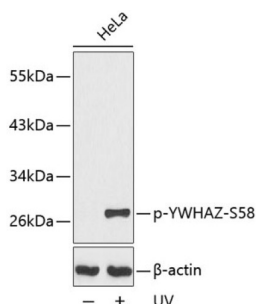


YWHAZ (pS58) Antibody

Catalogue No.: abx000247



Western blot analysis of lysates from HeLa cells, using Phospho-YWHAZ-S58 Antibody. Secondary antibody: HRP-conjugated Goat anti-Rabbit IgG (H+L) at 1/10000 dilution. Lysates/proteins: 25 µg per lane. Blocking buffer: 3% BSA.

YWHAZ (pS58) Antibody is a Rabbit Polyclonal antibody against YWHAZ (pS58). This gene product belongs to the 14-3-3 family of proteins which mediate signal transduction by binding to phosphoserine-containing proteins. This highly conserved protein family is found in both plants and mammals, and this protein is 99% identical to the mouse, rat and sheep orthologs. The encoded protein interacts with IRS1 protein, suggesting a role in regulating insulin sensitivity. Several transcript variants that differ in the 5' UTR but that encode the same protein have been identified for this gene.

Target:	YWHAZ (pS58)
Clonality:	Polyclonal
Reactivity:	Human, Mouse, Rat
Tested Applications:	WB, IF/ICC
Host:	Rabbit
Recommended dilutions:	WB: 1/500 - 1/2000, IF/ICC: 1/100 - 1/200. Optimal dilutions/concentrations should be determined by the end user.
Conjugation:	Unconjugated
Immunogen:	A phospho specific peptide corresponding to residues surrounding S58 of human YWHAZ
Isotype:	IgG
Form:	Liquid
Purification:	Purified by affinity chromatography.
Storage:	Aliquot and store at -20°C. Avoid repeated freeze/thaw cycles.
UniProt Primary AC:	P63104 (UniProt , ExPASy)

Datasheet

Version: 4.0.0

Revision date: 30 Aug 2025



Gene Symbol: YWHAZ

GeneID: [7534](#)

KEGG: hsa:7534

String: [9606.ENSP00000379287](#)

Molecular Weight: Calculated MW: 28 kDa
Observed MW: 28 kDa

Buffer: PBS, pH 7.3, containing 0.02% sodium azide, 50% glycerol.

Concentration: > 0.2 mg/ml

Note: THIS PRODUCT IS FOR RESEARCH USE ONLY. NOT FOR USE IN DIAGNOSTIC, THERAPEUTIC OR COSMETIC PROCEDURES. NOT FOR HUMAN OR ANIMAL CONSUMPTION.

For Reference Only