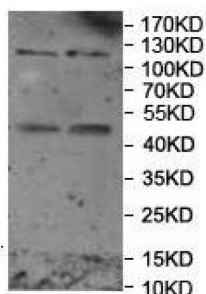


WD Repeat-Containing Protein 60 (WDR60) Antibody

Catalogue No.: abx036454



Western blot analysis of HeLa (Lane 1) and HepG2 (Lane 2) cell lysates using WD Repeat-Containing Protein 60 (WDR60) Antibody.

Rabbit Polyclonal against the WDR60 protein.

Target:	WD Repeat-Containing Protein 60 (WDR60)
Clonality:	Polyclonal
Reactivity:	Human
Tested Applications:	ELISA, WB
Host:	Rabbit
Recommended dilutions:	ELISA: 1/20000 - 1/80000, WB: 1/500 - 1/2000. Optimal dilutions/concentrations should be determined by the end user.
Conjugation:	Unconjugated
Immunogen:	Recombinant fragment corresponding to 808-1037 AA of human WDR60.
Isotype:	IgG
Form:	Lyophilized
Purification:	Purified by antigen affinity column chromatography.
Reconstitution:	Reconstitute in 100 µl of sterile distilled H ₂ O with 50% glycerol.
Storage:	Store at -20 °C. Avoid repeated freeze/thaw cycles.
Molecular Weight:	Observed MW: 123 kDa
Buffer:	Prior to lyophilization: 1% BSA and 0.02% NaN ₃ .

Datasheet

Version: 6.0.0

Revision date: 13 Sep 2025



Specificity: Predicted to react with Mouse and Rat WDR60.

Concentration: Lyophilized form: Not applicable.
After reconstitution: 1 mg/ml.

Note: THIS PRODUCT IS FOR RESEARCH USE ONLY. NOT FOR USE IN DIAGNOSTIC, THERAPEUTIC OR COSMETIC PROCEDURES. NOT FOR HUMAN OR ANIMAL CONSUMPTION.

For Reference Only