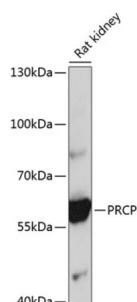


Prolylcarboxypeptidase (PRCP) Antibody

Catalogue No.: abx002965



Western blot analysis of lysates from rat kidney, using PRCP Antibody at 1/1000 dilution. Secondary antibody: HRP-conjugated Goat anti-Rabbit IgG (H+L) at 1/10000 dilution. Lysates/proteins: 25 µg per lane. Blocking buffer: 3% nonfat dry milk in TBST. Exposure time: 10s.

PRCP Antibody is a Rabbit Polyclonal antibody against PRCP. The protein encoded by this gene is a lysosomal prolylcarboxypeptidase, which cleaves C-terminal amino acids linked to proline in peptides such as angiotension II, III and des-Arg9-bradykinin. The cleavage occurs at acidic pH, but the enzyme activity is retained with some substrates at neutral pH. This enzyme has been shown to be an activator of the cell matrix-associated prekallikrein. The importance of angiotension II, one of the substrates of this enzyme, in regulating blood pressure and electrolyte balance suggests that this gene may be related to essential hypertension. Alternatively spliced transcript variants encoding distinct isoforms have been observed.

Target:	Prolylcarboxypeptidase (PRCP)
Clonality:	Polyclonal
Reactivity:	Rat
Tested Applications:	ELISA, WB
Host:	Rabbit
Recommended dilutions:	ELISA: 1 µg/ml, WB: 1/1000 - 1/2000. Optimal dilutions/concentrations should be determined by the end user.
Conjugation:	Unconjugated
Immunogen:	Recombinant fusion protein containing a sequence corresponding to amino acids 407-496 of human PRCP.
Isotype:	IgG
Form:	Liquid
Purification:	Purified by affinity chromatography.
Storage:	Aliquot and store at -20°C. Avoid repeated freeze/thaw cycles.
UniProt Primary AC:	P42785 (UniProt , ExPASy)

Datasheet

Version: 4.0.0

Revision date: 25 May 2025



Gene Symbol: PRCP

GeneID: [5547](#)

NCBI Accession: NP_005031.1

KEGG: hsa:5547

String: [9606.ENSP00000377055](#)

Molecular Weight: Calculated MW: 56 kDa
Observed MW: 56 kDa

Buffer: PBS, pH 7.3, containing 0.02% sodium azide, 50% glycerol.

Concentration: > 0.2 mg/ml

Note: THIS PRODUCT IS FOR RESEARCH USE ONLY. NOT FOR USE IN DIAGNOSTIC, THERAPEUTIC OR COSMETIC PROCEDURES. NOT FOR HUMAN OR ANIMAL CONSUMPTION.

For Reference Only