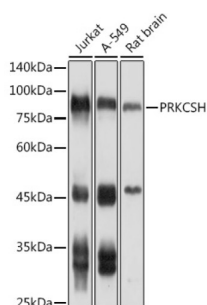
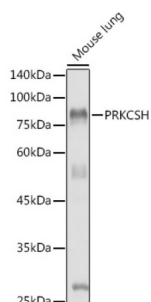


Protein Kinase C Substrate 80K-H (PRKCSH) Antibody

Catalogue No.: abx002970



Western blot analysis of extracts of various cell lines using PRKCSH Antibody (1/1000 dilution).



Western blot analysis of extracts of Mouse lung using PRKCSH Antibody (1/1000 dilution).

PRKCSH Antibody is a Rabbit Polyclonal antibody against PRKCSH. This gene encodes the beta-subunit of glucosidase II, an N-linked glycan-processing enzyme in the endoplasmic reticulum. The encoded protein is an acidic phosphoprotein known to be a substrate for protein kinase C. Mutations in this gene have been associated with the autosomal dominant polycystic liver disease. Alternative splicing results in multiple transcript variants.

Target: Protein Kinase C Substrate 80K-H (PRKCSH)

Clonality: Polyclonal

Reactivity: Human, Mouse, Rat

Tested Applications: WB

Host: Rabbit

Recommended dilutions: WB: 1/500 - 1/1000. Optimal dilutions/concentrations should be determined by the end user.

Conjugation: Unconjugated

Immunogen: Recombinant fusion protein corresponding to human PRKCSH

Isotype: IgG

Form: Liquid

Datasheet

Version: 2.0.0
Revision date: 16 Jul 2025



Purification:	Purified by affinity chromatography.
Storage:	Aliquot and store at -20°C. Avoid repeated freeze/thaw cycles.
UniProt Primary AC:	P14314 (UniProt , ExPASy)
Gene Symbol:	PRKCSH
GeneID:	5589
KEGG:	hsa:5589
String:	9606.ENSP00000466134
Molecular Weight:	Calculated MW: 59 kDa Observed MW: 80 kDa
Buffer:	PBS, pH 7.3, containing 0.01% thiomersal, 50% glycerol.
Concentration:	1 mg/ml
Note:	THIS PRODUCT IS FOR RESEARCH USE ONLY. NOT FOR USE IN DIAGNOSTIC, THERAPEUTIC OR COSMETIC PROCEDURES. NOT FOR HUMAN OR ANIMAL CONSUMPTION.

For Reference Only