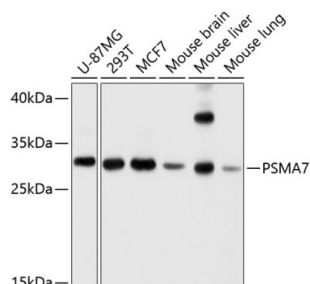
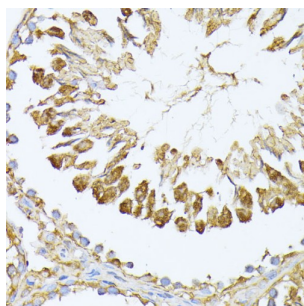


Proteasome Subunit Alpha Type 7 (PSMA7) Antibody

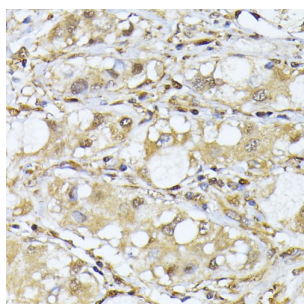
Catalogue No.: abx002977



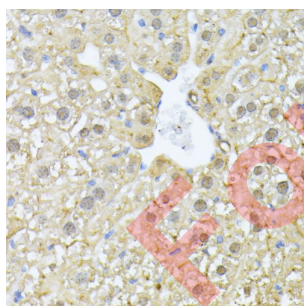
Western blot analysis of extracts of various cell lines using PSMA7 Antibody (1/1000 dilution).



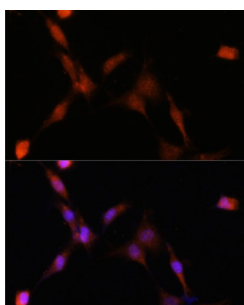
Immunohistochemistry of paraffin-embedded Rat testis using PSMA7 Antibody (1/100 dilution, 40x lens).



Immunohistochemistry of paraffin-embedded Human liver cancer using PSMA7 Antibody (1/100 dilution, 40x lens).



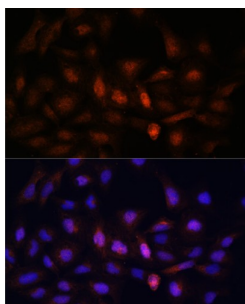
Immunohistochemistry of paraffin-embedded Mouse liver using PSMA7 Antibody (1/100 dilution, 40x lens).



Immunofluorescence analysis of NIH-3T3 cells using PSMA7 Antibody (1/100 dilution). Blue: DAPI for nuclear staining.

Datasheet

Version: 4.0.0
Revision date: 04 Aug 2025



Immunofluorescence analysis of U-2 OS cells using PSMA7 Antibody (1/100 dilution). Blue: DAPI for nuclear staining.

PSMA7 Antibody is a Rabbit Polyclonal antibody against PSMA7. The 26S proteasome is a multicatalytic proteinase complex with a highly ordered structure composed of 2 complexes, a 20S core and a 19S regulator. The 20S core is composed of 4 rings of 28 non-identical subunits; 2 rings are composed of 7 alpha subunits and 2 rings are composed of 7 beta subunits. Proteasomes are distributed throughout eukaryotic cells at a high concentration and cleave peptides in an ATP/ubiquitin-dependent process in a non-lysosomal pathway. This gene encodes a member of the peptidase T1A family that functions as a 20S core alpha subunit. The encoded protein interacts with the hepatitis B virus X protein and plays a role in regulating hepatitis C virus internal ribosome entry site (IRES) activity, an activity essential for viral replication. The encoded protein also plays a role in the cellular stress response by regulating hypoxia-inducible factor-1alpha. A pseudogene of this gene is located on the long arm of chromosome 9.

Target:	Proteasome Subunit Alpha Type 7 (PSMA7)
Clonality:	Polyclonal
Reactivity:	Human, Mouse, Rat
Tested Applications:	WB, IHC, IF/ICC
Host:	Rabbit
Recommended dilutions:	WB: 1/500 - 1/2000, IHC-P: 1/50 - 1/100, IF/ICC: 1/50 - 1/100. Not tested in IHC-F. Optimal dilutions/concentrations should be determined by the end user.
Conjugation:	Unconjugated
Immunogen:	Recombinant fusion protein corresponding to human PSMA7
Isotype:	IgG
Form:	Liquid
Purification:	Purified by affinity chromatography.
Storage:	Aliquot and store at -20°C. Avoid repeated freeze/thaw cycles.
UniProt Primary AC:	O14818 (UniProt , ExPASy)

Datasheet

Version: 4.0.0
Revision date: 04 Aug 2025



Gene Symbol: PSMA7

GeneID: [5688](#)

NCBI Accession: NP_002783.1

KEGG: hsa:5688

String: [9606.ENSP00000359910](#)

Molecular Weight: Calculated MW: 16 kDa/20 kDa/27 kDa
Observed MW: 30 kDa

Buffer: PBS, pH 7.3, containing 0.02% sodium azide, 50% glycerol.

Concentration: 1 mg/ml

Note: THIS PRODUCT IS FOR RESEARCH USE ONLY. NOT FOR USE IN DIAGNOSTIC, THERAPEUTIC OR COSMETIC PROCEDURES. NOT FOR HUMAN OR ANIMAL CONSUMPTION.

For Reference Only