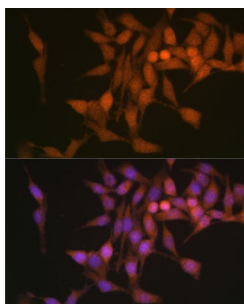


Proteasome Subunit Beta Type 6 (PSMB6) Antibody

Catalogue No.: abx002978



Immunofluorescence analysis of HeLa cells using PSMB6 Antibody (1/100 dilution, 40x lens).
Blue: DAPI for nuclear staining.

PSMB6 Antibody is a Rabbit Polyclonal antibody against PSMB6. The proteasome is a multicatalytic proteinase complex with a highly ordered ring-shaped 20S core structure. The core structure is composed of 4 rings of 28 non-identical subunits; 2 rings are composed of 7 alpha subunits and 2 rings are composed of 7 beta subunits. Proteasomes are distributed throughout eukaryotic cells at a high concentration and cleave peptides in an ATP/ubiquitin-dependent process in a non-lysosomal pathway. The encoded protein is a member of the proteasome B-type family, also known as the T1B family, and is a 20S core beta subunit in the proteasome. Alternatively spliced transcript variants encoding multiple isoforms have been observed for this gene.

Target:	Proteasome Subunit Beta Type 6 (PSMB6)
Clonality:	Polyclonal
Reactivity:	Human, Mouse, Rat
Tested Applications:	IF/ICC
Host:	Rabbit
Recommended dilutions:	IF/ICC: 1/50 - 1/100. Optimal dilutions/concentrations should be determined by the end user.
Conjugation:	Unconjugated
Immunogen:	Recombinant fusion protein corresponding to human PSMB6
Isotype:	IgG
Form:	Liquid
Purification:	Purified by affinity chromatography.
Storage:	Aliquot and store at -20°C. Avoid repeated freeze/thaw cycles.
UniProt Primary AC:	P28072 (UniProt , ExPASy)

Datasheet

Version: 4.0.0

Revision date: 06 Sep 2025



Gene Symbol: PSMB6

GeneID: [5694](#)

NCBI Accession: NP_002789.1

KEGG: hsa:5694

String: [9606.ENSP00000270586](#)

Buffer: PBS, pH 7.3, containing 0.02% sodium azide, 50% glycerol.

Concentration: 1 mg/ml

Note: THIS PRODUCT IS FOR RESEARCH USE ONLY. NOT FOR USE IN DIAGNOSTIC, THERAPEUTIC OR COSMETIC PROCEDURES. NOT FOR HUMAN OR ANIMAL CONSUMPTION.

For Reference Only