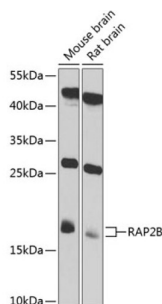


RAP2B, Member of RAS Oncogene Family (RAP2B) Antibody

Catalogue No.: abx002992



Western blot analysis of extracts of various cell lines using RAP2B Antibody (1/1000 dilution).

RAP2B Antibody is a Rabbit Polyclonal antibody against RAP2B. This intronless gene belongs to a family of RAS-related genes. The proteins encoded by these genes share approximately 50% amino acid identity with the classical RAS proteins and have numerous structural features in common. The most striking difference between the RAP and RAS proteins resides in their 61st amino acid: glutamine in RAS is replaced by threonine in RAP proteins. Evidence suggests that this protein may be polyisoprenylated and palmitoylated.

Target: RAP2B, Member of RAS Oncogene Family (RAP2B)

Clonality: Polyclonal

Reactivity: Human, Mouse, Rat

Tested Applications: WB

Host: Rabbit

Recommended dilutions: WB: 1/100 - 1/500. Optimal dilutions/concentrations should be determined by the end user.

Conjugation: Unconjugated

Immunogen: Recombinant fusion protein corresponding to human RAP2B

Isotype: IgG

Form: Liquid

Purification: Purified by affinity chromatography.

Storage: Aliquot and store at -20°C. Avoid repeated freeze/thaw cycles.

UniProt Primary AC: P61225 ([UniProt](#), [ExPASy](#))

Datasheet

Version: 4.0.0

Revision date: 20 Aug 2025



Gene Symbol: RAP2B

GeneID: [5912](#)

NCBI Accession: NP_002877.2

KEGG: hsa:5912

String: [9606.ENSP00000319096](#)

Molecular Weight: Calculated MW: 20 kDa
Observed MW: 18 kDa

Buffer: PBS, pH 7.3, containing 0.02% sodium azide, 50% glycerol.

Concentration: 1 mg/ml

Note: THIS PRODUCT IS FOR RESEARCH USE ONLY. NOT FOR USE IN DIAGNOSTIC, THERAPEUTIC OR COSMETIC PROCEDURES. NOT FOR HUMAN OR ANIMAL CONSUMPTION.

For Reference Only