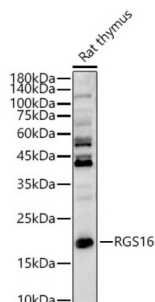


Regulator of G-Protein Signaling 16 (RGS16) Antibody

Catalogue No.: abx002999



Western blot analysis of lysates from Rat thymus, using RGS16 Antibody at 1/1000 dilution. Secondary antibody: HRP-conjugated Goat anti-Rabbit IgG (H+L) at 1/10000 dilution. Lysates/proteins: 25 µg per lane. Blocking buffer: 3% nonfat dry milk in TBST. Exposure time: 30s.

RGS16 Antibody is a Rabbit Polyclonal antibody against RGS16. The protein encoded by this gene belongs to the 'regulator of G protein signaling' family. It inhibits signal transduction by increasing the GTPase activity of G protein alpha subunits. It also may play a role in regulating the kinetics of signaling in the phototransduction cascade.

Target:	Regulator of G-Protein Signaling 16 (RGS16)
Clonality:	Polyclonal
Reactivity:	Human, Mouse, Rat
Tested Applications:	ELISA, WB, IHC
Host:	Rabbit
Recommended dilutions:	ELISA: 1 µg/ml, WB: 1/200 - 1/2000, IHC-P: 1/50 - 1/200. Not tested in IHC-F. Optimal dilutions/concentrations should be determined by the end user.
Conjugation:	Unconjugated
Immunogen:	Recombinant fusion protein containing a sequence corresponding to amino acids 1-202 of human RGS16.
Isotype:	IgG
Form:	Liquid
Purification:	Purified by affinity chromatography.
Storage:	Aliquot and store at -20°C. Avoid repeated freeze/thaw cycles.
UniProt Primary AC:	O15492 (UniProt , ExPASy)
Gene Symbol:	RGS16

Datasheet

Version: 12.0.0

Revision date: 25 Aug 2025



GeneID: [6004](#)

OMIM: [602514](#)

NCBI Accession: NP_002919.3

HGNC: 9997

KEGG: hsa:6004

Ensembl: ENSG00000143333

String: [9606.ENSP00000356529](#)

Molecular Weight: Calculated MW: 23 kDa
Observed MW: 23 kDa

Buffer: PBS, pH 7.3, containing 0.02% sodium azide, 50% glycerol.

Concentration: 2.06 mg/ml

Note: THIS PRODUCT IS FOR RESEARCH USE ONLY. NOT FOR USE IN DIAGNOSTIC, THERAPEUTIC OR COSMETIC PROCEDURES. NOT FOR HUMAN OR ANIMAL CONSUMPTION.