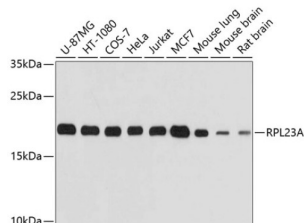
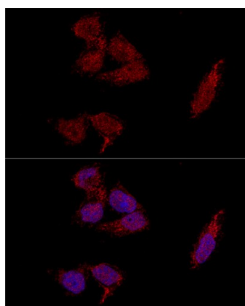


Ribosomal Protein L23A (RPL23A) Antibody

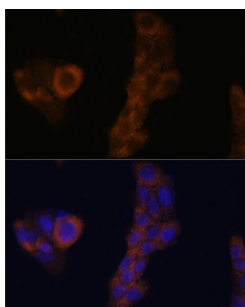
Catalogue No.: abx003006



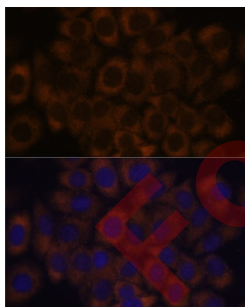
Western blot analysis of extracts of various cell lines using RPL23A Antibody (1/1000 dilution).



Confocal immunofluorescence analysis of HeLa cells using RPL23A Antibody (1/100 dilution). Blue: DAPI for nuclear staining.



Immunofluorescence analysis of A-431 cells using RPL23A Antibody (1/100 dilution). Blue: DAPI for nuclear staining.



Immunofluorescence analysis of HeLa cells using RPL23A Antibody (1/100 dilution). Blue: DAPI for nuclear staining.

RPL23A Antibody is a Rabbit Polyclonal antibody against RPL23A. Ribosomes, the organelles that catalyze protein synthesis, consist of a small 40S subunit and a large 60S subunit. Together these subunits are composed of 4 RNA species and approximately 80 structurally distinct proteins. This gene encodes a ribosomal protein that is a component of the 60S subunit. The protein belongs to the L23P family of ribosomal proteins. It is located in the cytoplasm. The protein may be one of the target molecules involved in mediating growth inhibition by interferon. In yeast, the corresponding protein binds to a specific site on the 26S rRNA. This gene is co-transcribed with the U42A, U42B, U101A, and U101B small nucleolar RNA genes, which are located in its third, first, second, and fourth introns, respectively. As is typical for genes encoding ribosomal proteins, there are multiple processed pseudogenes of this gene dispersed through the genome.

Datasheet

Version: 5.0.0
Revision date: 30 Sep 2025



Target:	Ribosomal Protein L23A (RPL23A)
Clonality:	Polyclonal
Reactivity:	Human, Mouse, Rat
Tested Applications:	WB, IF/ICC
Host:	Rabbit
Recommended dilutions:	WB: 1/500 - 1/2000, IF/ICC: 1/50 - 1/100. Optimal dilutions/concentrations should be determined by the end user.
Conjugation:	Unconjugated
Immunogen:	Recombinant fusion protein corresponding to human RPL23A
Isotype:	IgG
Form:	Liquid
Purification:	Purified by affinity chromatography.
Storage:	Aliquot and store at -20°C. Avoid repeated freeze/thaw cycles.
UniProt Primary AC:	P62750 (UniProt , ExPASy)
Gene Symbol:	RPL23A
GeneID:	6147
NCBI Accession:	NP_000975.2
KEGG:	hsa:6147
String:	9606.ENSP00000389103
Molecular Weight:	Calculated MW: 17 kDa Observed MW: 20 kDa
Buffer:	PBS, pH 7.3, containing 0.02% sodium azide, 50% glycerol.
Concentration:	1 mg/ml

Datasheet

Version: 5.0.0

Revision date: 30 Sep 2025



Note:

THIS PRODUCT IS FOR RESEARCH USE ONLY. NOT FOR USE IN DIAGNOSTIC, THERAPEUTIC OR COSMETIC PROCEDURES. NOT FOR HUMAN OR ANIMAL CONSUMPTION.

For Reference Only