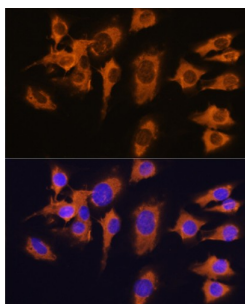
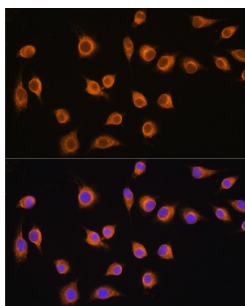


Solute Carrier Family 20 Member 1 (SLC20A1) Antibody

Catalogue No.: abx003032



Immunofluorescence analysis of C6 cells using SLC20A1 Antibody (1/100 dilution). Blue: DAPI for nuclear staining.



Immunofluorescence analysis of L929 cells using SLC20A1 Antibody (1/100 dilution). Blue: DAPI for nuclear staining.

SLC20A1 Antibody is a Rabbit Polyclonal antibody against SLC20A1. The protein encoded by this gene is a sodium-phosphate symporter that absorbs phosphate from interstitial fluid for use in cellular functions such as metabolism, signal transduction, and nucleic acid and lipid synthesis. The encoded protein is also a retroviral receptor, causing human cells to be susceptible to infection by gibbon ape leukemia virus, simian sarcoma-associated virus, feline leukemia virus subgroup B, and 10A1 murine leukemia virus.

Target: Solute Carrier Family 20 Member 1 (SLC20A1)

Clonality: Polyclonal

Reactivity: Human, Mouse, Rat

Tested Applications: IF/ICC

Host: Rabbit

Recommended dilutions: IF/ICC: 1/50 - 1/200. Optimal dilutions/concentrations should be determined by the end user.

Conjugation: Unconjugated

Immunogen: Recombinant fusion protein corresponding to human SLC20A1

Isotype: IgG

Datasheet

Version: 4.0.0

Revision date: 05 Mar 2025



Form:	Liquid
Purification:	Purified by affinity chromatography.
Storage:	Aliquot and store at -20°C. Avoid repeated freeze/thaw cycles.
UniProt Primary AC:	Q8WUM9 (UniProt , ExPASy)
Gene Symbol:	SLC20A1
GeneID:	6574
NCBI Accession:	NP_005406.3
KEGG:	hsa:6574
String:	9606.ENSP00000272542
Buffer:	PBS, pH 7.3, containing 0.02% sodium azide, 50% glycerol.
Concentration:	1 mg/ml
Note:	THIS PRODUCT IS FOR RESEARCH USE ONLY. NOT FOR USE IN DIAGNOSTIC, THERAPEUTIC OR COSMETIC PROCEDURES. NOT FOR HUMAN OR ANIMAL CONSUMPTION.