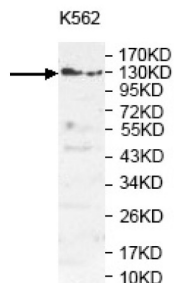
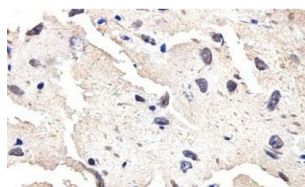


Pleckstrin Homology Domain-Containing Family G Member 3 (PLEKHG3) Antibody

Catalogue No.: abx037307



WB analysis of extract of K562 cell lysate using anti-PLEKHG3 antibody (1/1000 dilution).



IHC-P analysis of paraffin-embedded fetal brain tissue using anti-PLEKHG3 antibody (1/100 dilution).

Rabbit Polyclonal against the PLEKHG3 protein.

Target: Pleckstrin Homology Domain-Containing Family G Member 3 (PLEKHG3)

Clonality: Polyclonal

Reactivity: Human

Tested Applications: ELISA, WB, IHC

Host: Rabbit

Recommended dilutions: ELISA: 1/20000 - 1/80000, WB: 1/500 - 1/2000, IHC: 1/100 - 1/200. Optimal dilutions/concentrations should be determined by the end user.

Conjugation: Unconjugated

Immunogen: Recombinant fragment corresponding to 58-350 AA of human PLEKHG3.

Isotype: IgG

Form: Lyophilized

Datasheet

Version: 13.0.0

Revision date: 06 Sep 2025



Purification: Purified by antigen affinity column chromatography.

Reconstitution: Reconstitute in 100 µl of sterile distilled H₂O with 50% glycerol.

Storage: Store at -20°C. Avoid repeated freeze/thaw cycles.

Molecular Weight: Observed MW: 134 kDa

Buffer: Prior to lyophilization: 1% BSA and 0.02% NaN₃.

Specificity: Predicted to react with Mouse and Rat PLEKHG3.

Concentration: Lyophilized form: Not applicable.
After reconstitution: 1 mg/ml.

Note: THIS PRODUCT IS FOR RESEARCH USE ONLY. NOT FOR USE IN DIAGNOSTIC, THERAPEUTIC OR COSMETIC PROCEDURES. NOT FOR HUMAN OR ANIMAL CONSUMPTION.

For Reference Only