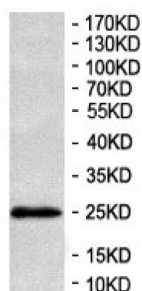


RAB27A, Member RAS Oncogene Family (RAB27A) Antibody

Catalogue No.: abx037347



WB analysis of mouse muscle tissue.

Rabbit Polyclonal against the RAB27A protein.

| | |
|-------------------------------|--|
| Target: | RAB27A, Member RAS Oncogene Family (RAB27A) |
| Clonality: | Polyclonal |
| Reactivity: | Human |
| Tested Applications: | ELISA, WB |
| Host: | Rabbit |
| Recommended dilutions: | ELISA: 1/20000 - 1/80000, WB: 1/500 - 1/2000. Optimal dilutions/concentrations should be determined by the end user. |
| Conjugation: | Unconjugated |
| Immunogen: | Recombinant fragment corresponding to 1-215 AA of human RAB27A. |
| Isotype: | IgG |
| Form: | Lyophilized |
| Purification: | Purified by antigen affinity column chromatography. |
| Reconstitution: | Reconstitute in 100 µl of sterile distilled H ₂ O with 50% glycerol. |
| Storage: | Store at -20 °C. Avoid repeated freeze/thaw cycles. |
| Molecular Weight: | Observed MW: 25 kDa |
| Buffer: | Prior to lyophilization: 1% BSA and 0.02% NaN ₃ . |

Datasheet

Version: 3.0.0

Revision date: 15 Aug 2025



Specificity: Predicted to react with Mouse and Rat RAB27A.

Concentration: Lyophilized form: Not applicable.
After reconstitution: 1 mg/ml.

Note: THIS PRODUCT IS FOR RESEARCH USE ONLY. NOT FOR USE IN DIAGNOSTIC, THERAPEUTIC OR COSMETIC PROCEDURES. NOT FOR HUMAN OR ANIMAL CONSUMPTION.

For Reference Only