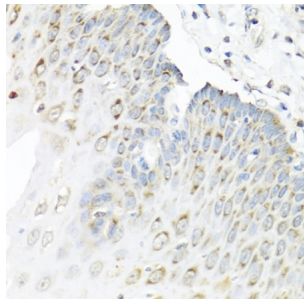


Double-Stranded RNA-Binding Protein Staufen Homolog 1 (STAU1) Antibody

Catalogue No.: abx003045



Immunohistochemistry of paraffin-embedded Human esophagus using STAU1 Antibody (1/100 dilution, 40x lens).

STAU1 Antibody is a Rabbit Polyclonal antibody against STAU1. Staufen is a member of the family of double-stranded RNA (dsRNA)-binding proteins involved in the transport and/or localization of mRNAs to different subcellular compartments and/or organelles. These proteins are characterized by the presence of multiple dsRNA-binding domains which are required to bind RNAs having double-stranded secondary structures. The human homologue of staufen encoded by STAU, in addition contains a microtubule-binding domain similar to that of microtubule-associated protein 1B, and binds tubulin. The STAU gene product has been shown to be present in the cytoplasm in association with the rough endoplasmic reticulum (RER), implicating this protein in the transport of mRNA via the microtubule network to the RER, the site of translation. Five transcript variants resulting from alternative splicing of STAU gene and encoding three isoforms have been described. Three of these variants encode the same isoform, however, differ in their 5'UTR.

Target: Double-Stranded RNA-Binding Protein Staufen Homolog 1 (STAU1)

Research Area: Signal Transduction

Clonality: Polyclonal

Reactivity: Human, Mouse, Rat

Tested Applications: IHC

Host: Rabbit

Recommended dilutions: IHC-P: 1/50 - 1/100. Not tested in IHC-F. Optimal dilutions/concentrations should be determined by the end user.

Conjugation: Unconjugated

Immunogen: Recombinant fusion protein corresponding to human STAU1

Isotype: IgG

Form: Liquid

Datasheet

Version: 5.0.0

Revision date: 14 Sep 2025



Purification:	Purified by affinity chromatography.
Storage:	Aliquot and store at -20°C. Avoid repeated freeze/thaw cycles.
UniProt Primary AC:	O95793 (UniProt , ExPASy)
Gene Symbol:	STAU1
GeneID:	6780
NCBI Accession:	NP_059347.2
KEGG:	hsa:6780
String:	9606.ENSP00000360922
Buffer:	PBS, pH 7.3, containing 0.02% sodium azide, 50% glycerol.
Concentration:	1 mg/ml
Note:	THIS PRODUCT IS FOR RESEARCH USE ONLY. NOT FOR USE IN DIAGNOSTIC, THERAPEUTIC OR COSMETIC PROCEDURES. NOT FOR HUMAN OR ANIMAL CONSUMPTION.