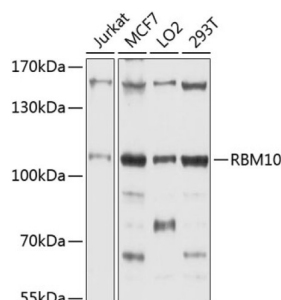


RNA Binding Motif Protein 10 (RBM10) Antibody

Catalogue No.: abx003115



Western blot analysis of extracts of various cell lines using RBM10 Antibody (1/1000 dilution).

RBM10 Antibody is a Rabbit Polyclonal antibody against RBM10. This gene encodes a nuclear protein that belongs to a family proteins that contain an RNA-binding motif. The encoded protein associates with hnRNP proteins and may be involved in regulating alternative splicing. Defects in this gene are the cause of the X-linked recessive disorder, TARP syndrome. Alternate splicing results in multiple transcript variants.

Target: RNA Binding Motif Protein 10 (RBM10)

Clonality: Polyclonal

Reactivity: Human

Tested Applications: WB

Host: Rabbit

Recommended dilutions: WB: 1/500 - 1/2000. Optimal dilutions/concentrations should be determined by the end user.

Conjugation: Unconjugated

Immunogen: Recombinant fusion protein corresponding to human RBM10

Isotype: IgG

Form: Liquid

Purification: Purified by affinity chromatography.

Storage: Aliquot and store at -20°C. Avoid repeated freeze/thaw cycles.

UniProt Primary AC: P98175 ([UniProt](#), [ExPASy](#))

Gene Symbol: RBM10

Datasheet

Version: 4.0.0

Revision date: 30 Sep 2025



GeneID: [8241](#)

NCBI Accession: NP_005667.2

KEGG: hsa:8241

String: [9606.ENSP00000328848](#)

Molecular Weight: Calculated MW: 94 kDa/103 kDa
Observed MW: 105 kDa

Buffer: PBS, pH 7.3, containing 0.02% sodium azide, 50% glycerol.

Concentration: 1 mg/ml

Note: THIS PRODUCT IS FOR RESEARCH USE ONLY. NOT FOR USE IN DIAGNOSTIC, THERAPEUTIC OR COSMETIC PROCEDURES. NOT FOR HUMAN OR ANIMAL CONSUMPTION.

For Reference Only