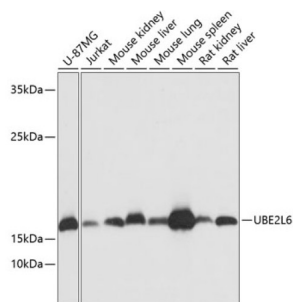
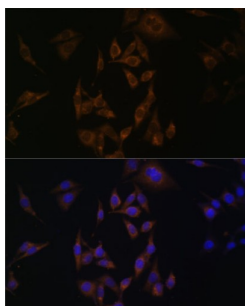


Ubiquitin/ISG15-Conjugating Enzyme E2 L6 (UBE2L6) Antibody

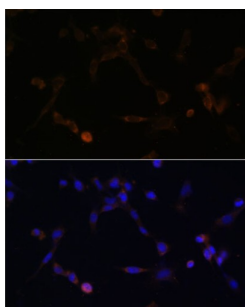
Catalogue No.: abx003178



Western blot analysis of extracts of various cell lines using UBE2L6 Antibody (1/1000 dilution).



Immunofluorescence analysis of HeLa cells using UBE2L6 Antibody (1/100 dilution). Blue: DAPI for nuclear staining.



Immunofluorescence analysis of NIH/3T3 cells using UBE2L6 Antibody (1/100 dilution). Blue: DAPI for nuclear staining.

UBE2L6 Antibody is a Rabbit Polyclonal antibody against UBE2L6. The modification of proteins with ubiquitin is an important cellular mechanism for targeting abnormal or short-lived proteins for degradation. Ubiquitination involves at least three classes of enzymes: ubiquitin-activating enzymes (E1s), ubiquitin-conjugating enzymes (E2s) and ubiquitin-protein ligases (E3s). This gene encodes a member of the E2 ubiquitin-conjugating enzyme family. This enzyme is highly similar in primary structure to the enzyme encoded by the UBE2L3 gene. Two alternatively spliced transcript variants encoding distinct isoforms have been found for this gene.

Target: Ubiquitin/ISG15-Conjugating Enzyme E2 L6 (UBE2L6)

Clonality: Polyclonal

Reactivity: Human, Mouse, Rat

Tested Applications: WB, IF/ICC

Host: Rabbit

Datasheet

Version: 4.0.0
Revision date: 31 Aug 2025



Recommended dilutions: WB: 1/500 - 1/2000, IF/ICC: 1/50 - 1/200. Optimal dilutions/concentrations should be determined by the end user.

Conjugation: Unconjugated

Immunogen: A synthetic peptide corresponding to human UBE2L6

Isotype: IgG

Form: Liquid

Purification: Purified by affinity chromatography.

Storage: Aliquot and store at -20°C. Avoid repeated freeze/thaw cycles.

UniProt Primary AC: O14933 ([UniProt](#), [ExPASy](#))

Gene Symbol: UBE2L6

GenelD: [9246](#)

NCBI Accession: NP_004214.1

Molecular Weight: Calculated MW: 10 kDa/17 kDa
Observed MW: 18 kDa

Buffer: PBS, pH 7.3, containing 0.02% sodium azide, 50% glycerol.

Concentration: 1 mg/ml

Note: THIS PRODUCT IS FOR RESEARCH USE ONLY. NOT FOR USE IN DIAGNOSTIC, THERAPEUTIC OR COSMETIC PROCEDURES. NOT FOR HUMAN OR ANIMAL CONSUMPTION.