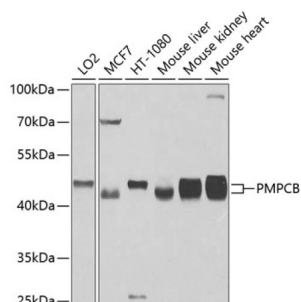


Peptidase, Mitochondrial Processing Beta Subunit (PMPCB) Antibody

Catalogue No.: abx003204



Western blot analysis of various lysates using PMPCB Antibody at 1/1000 dilution. Secondary antibody: HRP-conjugated Goat anti-Rabbit IgG (H+L) at 1/10000 dilution. Lysates/proteins: 25 µg per lane. Blocking buffer: 3% nonfat dry milk in TBST. Exposure time: 90s.

PMPCB Antibody is a Rabbit Polyclonal antibody against PMPCB. This gene is a member of the peptidase M16 family and encodes a protein with a zinc-binding motif. This protein is located in the mitochondrial matrix and catalyzes the cleavage of the leader peptides of precursor proteins newly imported into the mitochondria, though it only functions as part of a heterodimeric complex.

Target:	Peptidase, Mitochondrial Processing Beta Subunit (PMPCB)
Clonality:	Polyclonal
Reactivity:	Human, Mouse, Rat
Tested Applications:	ELISA, WB
Host:	Rabbit
Recommended dilutions:	ELISA: 1 µg/ml, WB: 1/500 - 1/2000. Optimal dilutions/concentrations should be determined by the end user.
Conjugation:	Unconjugated
Immunogen:	Recombinant protein corresponding to PMPCB. The exact sequence is proprietary.
Isotype:	IgG
Form:	Liquid
Purification:	Purified by affinity chromatography.
Storage:	Aliquot and store at -20°C. Avoid repeated freeze/thaw cycles.
UniProt Primary AC:	O75439 (UniProt , ExPASy)
Gene Symbol:	PMPCB

Datasheet

Version: 4.0.0
Revision date: 13 Oct 2025



GeneID: [9512](#)

NCBI Accession: NP_004270.2

KEGG: hsa:9512

String: [9606.ENSP00000249269](#)

Molecular Weight: Calculated MW: 54 kDa
Observed MW: 50 kDa

Buffer: PBS, pH 7.3, containing 0.02% sodium azide, 50% glycerol.

Concentration: > 0.2 mg/ml

Note: THIS PRODUCT IS FOR RESEARCH USE ONLY. NOT FOR USE IN DIAGNOSTIC, THERAPEUTIC OR COSMETIC PROCEDURES. NOT FOR HUMAN OR ANIMAL CONSUMPTION.

For Reference Only