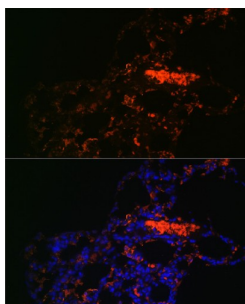


ATP Binding Cassette Subfamily G Member 1 (ABCG1) Antibody

Catalogue No.: abx003219



Immunofluorescence analysis of Rat lung using ABCG1 Antibody (1/100 dilution). Blue: DAPI for nuclear staining.

ABCG1 Antibody is a Rabbit Polyclonal antibody against ABCG1. The protein encoded by this gene is a member of the superfamily of ATP-binding cassette (ABC) transporters. ABC proteins transport various molecules across extra- and intra-cellular membranes. ABC genes are divided into seven distinct subfamilies (ABC1, MDR/TAP, MRP, ALD, OABP, GCN20, White). This protein is a member of the White subfamily. It is involved in macrophage cholesterol and phospholipids transport, and may regulate cellular lipid homeostasis in other cell types. Six alternative splice variants have been identified.

Target:	ATP Binding Cassette Subfamily G Member 1 (ABCG1)
Clonality:	Polyclonal
Reactivity:	Human, Mouse, Rat
Tested Applications:	IF/ICC
Host:	Rabbit
Recommended dilutions:	IF/ICC: 1/50 - 1/100. Optimal dilutions/concentrations should be determined by the end user.
Conjugation:	Unconjugated
Immunogen:	Recombinant fusion protein corresponding to human ABCG1
Isotype:	IgG
Form:	Liquid
Purification:	Purified by affinity chromatography.
Storage:	Aliquot and store at -20°C. Avoid repeated freeze/thaw cycles.
UniProt Primary AC:	P45844 (UniProt , ExPASy)

Datasheet

Version: 6.0.0
Revision date: 14 Jul 2025



Gene Symbol: ABCG1

GeneID: [9619](#)

NCBI Accession: NP_004906.3

KEGG: hsa:9619

String: [9606.ENSP00000354995](#)

Buffer: PBS, pH 7.3, containing 0.02% sodium azide, 50% glycerol.

Concentration: 1 mg/ml

Note: THIS PRODUCT IS FOR RESEARCH USE ONLY. NOT FOR USE IN DIAGNOSTIC, THERAPEUTIC OR COSMETIC PROCEDURES. NOT FOR HUMAN OR ANIMAL CONSUMPTION.

For Reference Only