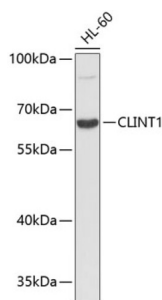


## Clathrin Interactor 1 (CLINT1) Antibody

Catalogue No.: abx003223



Western blot analysis of lysates from HL-60 cells, using CLINT1 Antibody. Secondary antibody: HRP-conjugated Goat anti-Rabbit IgG (H+L) at 1/10000 dilution. Lysates/proteins: 25 µg per lane. Blocking buffer: 3% nonfat dry milk in TBST.

CLINT1 Antibody is a Rabbit Polyclonal antibody against CLINT1. This gene encodes a protein with similarity to the epsin family of endocytic adapter proteins. The encoded protein interacts with clathrin, the adapter protein AP-1 and phosphoinositides. This protein may be involved in the formation of clathrin coated vesicles and trafficking between the trans-Golgi network and endosomes. Mutations in this gene are associated with a susceptibility to schizophrenia and psychotic disorders. Alternate splicing results in multiple transcript variants.

|                               |  |
|-------------------------------|--|
| <b>Target:</b>                | Clathrin Interactor 1 (CLINT1)   |
| <b>Clonality:</b>             | Polyclonal   |
| <b>Reactivity:</b>            | Human  |
| <b>Tested Applications:</b>   | ELISA, WB  |
| <b>Host:</b>                  | Rabbit   |
| <b>Recommended dilutions:</b> | ELISA: 1 µg/ml, WB: 1/500 - 1/1000. Optimal dilutions/concentrations should be determined by the end user. |
| <b>Conjugation:</b>           | Unconjugated   |
| <b>Immunogen:</b>             | Recombinant fusion protein containing a sequence corresponding to amino acids 160-360 of human CLINT1.     |
| <b>Isotype:</b>               | IgG  |
| <b>Form:</b>                  | Liquid   |
| <b>Purification:</b>          | Purified by affinity chromatography.   |
| <b>Storage:</b>               | Aliquot and store at -20°C. Avoid repeated freeze/thaw cycles.   |
| <b>UniProt Primary AC:</b>    | Q14677 ( <a href="#">UniProt</a> , <a href="#">ExPASy</a> )  |

# Datasheet

Version: 3.0.0

Revision date: 09 Jun 2025



**Gene Symbol:** CLINT1

**GeneID:** [9685](#)

**NCBI Accession:** NP\_055481.1

**KEGG:** hsa:9685

**String:** [9606.ENSP00000429824](#)

**Molecular Weight:** Calculated MW: 68 kDa  
Observed MW: 64 kDa

**Buffer:** PBS, pH 7.3, containing 0.01% thimerosal, 50% glycerol.

**Concentration:** > 0.2 mg/ml

**Note:** THIS PRODUCT IS FOR RESEARCH USE ONLY. NOT FOR USE IN DIAGNOSTIC, THERAPEUTIC OR COSMETIC PROCEDURES. NOT FOR HUMAN OR ANIMAL CONSUMPTION.

For Reference Only