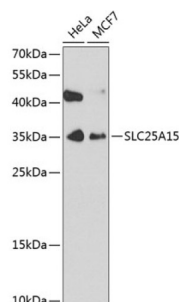


Solute Carrier Family 25 Member 15 (SLC25A15) Antibody

Catalogue No.: abx003265



Western blot analysis of extracts of various cell lines using SLC25A15 Antibody (1/1000 dilution).

SLC25A15 Antibody is a Rabbit Polyclonal antibody against SLC25A15. This gene is a member of the mitochondrial carrier family. The encoded protein transports ornithine across the inner mitochondrial membrane from the cytosol to the mitochondrial matrix. The protein is an essential component of the urea cycle, and functions in ammonium detoxification and biosynthesis of the amino acid arginine. Mutations in this gene result in hyperornithinemia-hyperammonemia-homocitrullinuria (HHH) syndrome. There is a pseudogene of this locus on the Y chromosome.

Target:	Solute Carrier Family 25 Member 15 (SLC25A15)
Clonality:	Polyclonal
Reactivity:	Human
Tested Applications:	WB
Host:	Rabbit
Recommended dilutions:	WB: 1/200 - 1/2000. Optimal dilutions/concentrations should be determined by the end user.
Conjugation:	Unconjugated
Immunogen:	Recombinant fusion protein corresponding to human SLC25A15
Isotype:	IgG
Form:	Liquid
Purification:	Purified by affinity chromatography.
Storage:	Aliquot and store at -20°C. Avoid repeated freeze/thaw cycles.
UniProt Primary AC:	Q9Y619 (UniProt , ExPASy)

Datasheet

Version: 5.0.0

Revision date: 05 Mar 2025



Gene Symbol: SLC25A15

GeneID: [10166](#)

NCBI Accession: NP_055067.1

String: [9606.ENSP00000342267](#)

Molecular Weight: Calculated MW: 32 kDa
Observed MW: 35 kDa

Buffer: PBS, pH 7.3, containing 0.02% sodium azide, 50% glycerol.

Concentration: 1 mg/ml

Note: THIS PRODUCT IS FOR RESEARCH USE ONLY. NOT FOR USE IN DIAGNOSTIC, THERAPEUTIC OR COSMETIC PROCEDURES. NOT FOR HUMAN OR ANIMAL CONSUMPTION.

For Reference Only