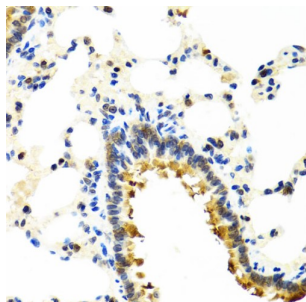
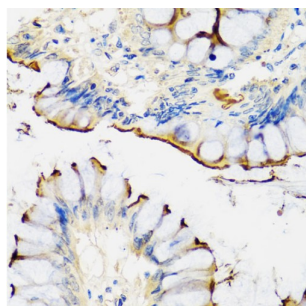


Cartilage Associated Protein (CRTAP) Antibody

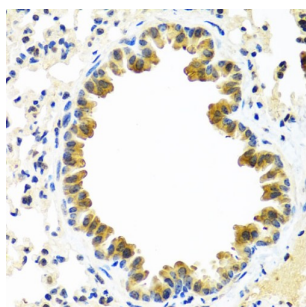
Catalogue No.: abx003307



Immunohistochemistry of paraffin-embedded Rat lung using CRTAP Antibody (1/100 dilution, 40x lens).



Immunohistochemistry of paraffin-embedded Human colon using CRTAP Antibody (1/100 dilution, 40x lens).



Immunohistochemistry of paraffin-embedded Mouse lung using CRTAP Antibody (1/100 dilution, 40x lens).

CRTAP Antibody is a Rabbit Polyclonal antibody against CRTAP. The protein encoded by this gene is similar to the chicken and mouse CRTAP genes. The encoded protein is a scaffolding protein that may influence the activity of at least one member of the cytohesin/ARNO family in response to specific cellular stimuli. Defects in this gene are associated with osteogenesis imperfecta, a connective tissue disorder characterized by bone fragility and low bone mass.

Target: Cartilage Associated Protein (CRTAP)

Clonality: Polyclonal

Reactivity: Human, Mouse, Rat

Tested Applications: IHC

Host: Rabbit

Recommended dilutions: IHC-P: 1/50 - 1/200. Not tested in IHC-F. Optimal dilutions/concentrations should be determined by the end user.

Datasheet

Version: 3.0.0
Revision date: 20 Jun 2025



Conjugation:	Unconjugated
Immunogen:	Recombinant fusion protein corresponding to human CRTAP
Isotype:	IgG
Form:	Liquid
Purification:	Purified by affinity chromatography.
Storage:	Aliquot and store at -20°C. Avoid repeated freeze/thaw cycles.
UniProt Primary AC:	O75718 (UniProt , ExPASy)
Gene Symbol:	CRTAP
GeneID:	10491
NCBI Accession:	NP_006362.1
KEGG:	hsa:10491
String:	9606.ENSP00000323696
Buffer:	PBS, pH 7.3, containing 0.02% sodium azide, 50% glycerol.
Concentration:	1 mg/ml
Note:	THIS PRODUCT IS FOR RESEARCH USE ONLY. NOT FOR USE IN DIAGNOSTIC, THERAPEUTIC OR COSMETIC PROCEDURES. NOT FOR HUMAN OR ANIMAL CONSUMPTION.