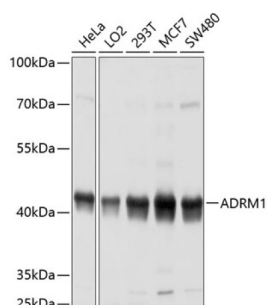
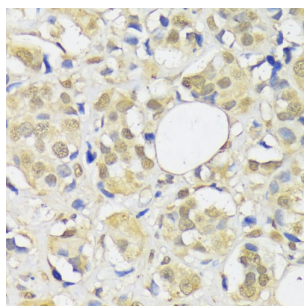


Proteasomal Ubiquitin Receptor ADRM1 (ADRM1) Antibody

Catalogue No.: abx003352



Western blot analysis of extracts of various cell lines using ADRM1 Antibody (1/1000 dilution).



Immunohistochemistry of paraffin-embedded Human breast cancer using ADRM1 Antibody (1/100 dilution, 40x lens).

ADRM1 Antibody is a Rabbit Polyclonal antibody against ADRM1. This gene encodes a member of the adhesion regulating molecule 1 protein family. The encoded protein is a component of the proteasome where it acts as a ubiquitin receptor and recruits the deubiquitinating enzyme, ubiquitin carboxyl-terminal hydrolase L5. Increased levels of the encoded protein are associated with increased cell adhesion, which is likely an indirect effect of this intracellular protein. Dysregulation of this gene has been implicated in carcinogenesis. Alternative splicing results in multiple transcript variants.

Target: Proteasomal Ubiquitin Receptor ADRM1 (ADRM1)

Clonality: Polyclonal

Reactivity: Human, Mouse, Rat

Tested Applications: WB, IHC

Host: Rabbit

Recommended dilutions: WB: 1/1000 - 1/4000, IHC-P: 1/50 - 1/200. Not tested in IHC-F. Optimal dilutions/concentrations should be determined by the end user.

Conjugation: Unconjugated

Immunogen: Recombinant fusion protein corresponding to human ADRM1

Isotype: IgG

Datasheet

Version: 5.0.0

Revision date: 08 Aug 2025



Form:	Liquid
Purification:	Purified by affinity chromatography.
Storage:	Aliquot and store at -20°C. Avoid repeated freeze/thaw cycles.
UniProt Primary AC:	Q16186 (UniProt , ExPASy)
Gene Symbol:	ADRM1
GeneID:	11047
NCBI Accession:	NP_008933.2
KEGG:	hsa:11047
String:	9606.ENSP00000478877
Molecular Weight:	Calculated MW: 42 kDa Observed MW: 42 kDa
Buffer:	PBS, pH 7.3, containing 0.02% sodium azide, 50% glycerol.
Concentration:	1 mg/ml
Note:	THIS PRODUCT IS FOR RESEARCH USE ONLY. NOT FOR USE IN DIAGNOSTIC, THERAPEUTIC OR COSMETIC PROCEDURES. NOT FOR HUMAN OR ANIMAL CONSUMPTION.