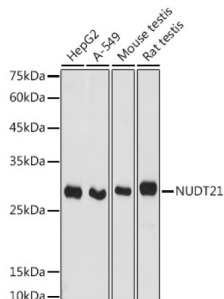
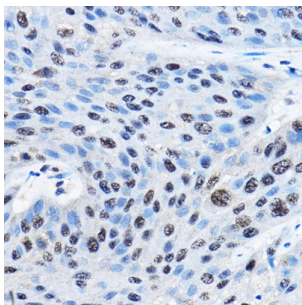


Cleavage And Polyadenylation Specificity Factor Subunit 5 (NUDT21) Antibody

Catalogue No.: abx003353



Western blot analysis of various lysates using NUDT21 Antibody at 1/1000 dilution. Secondary antibody: HRP-conjugated Goat anti-Rabbit IgG (H+L) at 1/10000 dilution. Lysates/proteins: 25 µg per lane. Blocking buffer: 3% nonfat dry milk in TBST. Exposure time: 30s.



Immunohistochemistry analysis of paraffin-embedded Human esophageal cancer using NUDT21 Antibody at dilution of 1/100 (40x lens). High pressure antigen retrieval performed in 0.01 M Citrate buffer (pH 6.0) prior to IHC staining.

NUDT21 Antibody is a Rabbit Polyclonal antibody against NUDT21. The protein encoded by this gene is one subunit of a cleavage factor required for 3' RNA cleavage and polyadenylation processing. The interaction of the protein with the RNA is one of the earliest steps in the assembly of the 3' end processing complex and facilitates the recruitment of other processing factors. This gene encodes the 25kD subunit of the protein complex, which is composed of four polypeptides.

Target: Cleavage And Polyadenylation Specificity Factor Subunit 5 (NUDT21)

Clonality: Polyclonal

Reactivity: Human, Mouse, Rat

Tested Applications: ELISA, WB, IHC

Host: Rabbit

Recommended dilutions: ELISA: 1 µg/ml, WB: 1/500 - 1/1000, IHC-P: 1/50 - 1/200. Not tested in IHC-F. Optimal dilutions/concentrations should be determined by the end user.

Conjugation: Unconjugated

Immunogen: Recombinant fusion protein containing a sequence corresponding to amino acids 1-227 of human NUDT21.

Isotype: IgG

Datasheet

Version: 4.0.0
Revision date: 12 Jun 2025



Form:	Liquid
Purification:	Purified by affinity chromatography.
Storage:	Aliquot and store at -20°C. Avoid repeated freeze/thaw cycles.
UniProt Primary AC:	O43809 (UniProt , ExPASy)
Gene Symbol:	NUDT21
GeneID:	11051
NCBI Accession:	NP_008937.1
KEGG:	hsa:11051
String:	9606.ENSP00000300291
Molecular Weight:	Calculated MW: 26 kDa Observed MW: 26 kDa
Buffer:	PBS, pH 7.3, containing 0.02% sodium azide, 50% glycerol.
Concentration:	> 0.2 mg/ml
Note:	THIS PRODUCT IS FOR RESEARCH USE ONLY. NOT FOR USE IN DIAGNOSTIC, THERAPEUTIC OR COSMETIC PROCEDURES. NOT FOR HUMAN OR ANIMAL CONSUMPTION.