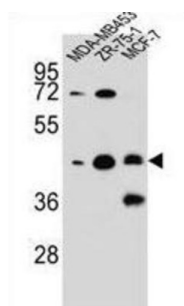
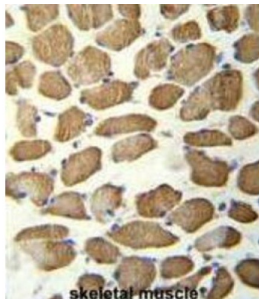


Kelch Repeat And BTB Domain-Containing Protein 13 (KBTBD13) Antibody

Catalogue No.: abx026612



The KBTBD13 gene belongs to a family of genes encoding proteins containing a BTB domain and several kelch repeats. The BTB domain functions as a protein-protein interaction module, which includes an ability to self-associate or to interact with non-BTB domain-containing proteins. The kelch motif typically occurs in groups of five to seven repeats, and has been found in proteins with diverse functions. Known functions of these family members include transcription regulation, ion channel tetramerization and gating, protein ubiquitination or degradation, and cytoskeleton regulation. The exact function of this family member has yet to be determined.

Target: Kelch Repeat And BTB Domain-Containing Protein 13 (KBTBD13)

Clonality: Polyclonal

Reactivity: Human

Tested Applications: ELISA, WB, IHC

Host: Rabbit

Recommended dilutions: WB: 1/1000, IHC-P: 1/10 - 1/50. Not tested in IHC-F. Optimal dilutions/concentrations should be determined by the end user.

Conjugation: Unconjugated

Immunogen: KLH-conjugated synthetic peptide between 409-438 amino acids from the C-terminal region of human hCG_1645727.

Datasheet

Version: 2.0.0

Revision date: 28 Jun 2025



Isotype:	IgG
Form:	Liquid
Purification:	Purified through a protein A column, followed by peptide affinity purification.
Storage:	Aliquot and store at -20°C. Avoid repeated freeze/thaw cycles.
UniProt Primary AC:	C9JR72 (UniProt , ExPASy)
KEGG:	hsa:390594
String:	9606.ENSP00000388723
Molecular Weight:	Calculated MW: 49.5 kDa
Buffer:	PBS containing 0.09% sodium azide.
Specificity:	Predicted to react with Mouse KBTBD13.
Note:	THIS PRODUCT IS FOR RESEARCH USE ONLY. NOT FOR USE IN DIAGNOSTIC, THERAPEUTIC OR COSMETIC PROCEDURES. NOT FOR HUMAN OR ANIMAL CONSUMPTION.

For Reference Only