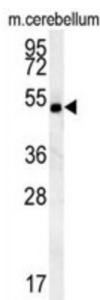


Protein Shisa-7 (SHISA7) Antibody

Catalogue No.: abx032625



Western blot analysis of extracts of Cerebellum tissue lysates (15 µg per lane) using SHISA7 antibody.

SHISA7 Antibody is a Rabbit Polyclonal antibody against Protein shisa-7 (SHISA7).

Target: Protein Shisa-7 (SHISA7)

Clonality: Polyclonal

Reactivity: Human, Mouse

Tested Applications: ELISA, WB

Host: Rabbit

Recommended dilutions: WB: 1/1000. Optimal dilutions/concentrations should be determined by the end user.

Conjugation: Unconjugated

Immunogen: KLH-conjugated synthetic peptide between 308-337 amino acids from the Central region of human hCG_2039146.

Isotype: IgG

Form: Liquid

Purification: Purified through a protein A column, followed by peptide affinity purification.

Storage: Store at 2-8°C for up to 2 weeks, or for longer term, aliquot and store at -20°C. Avoid repeated freeze/thaw cycles.

UniProt Primary AC: A6NL88 ([UniProt](#), [ExPASy](#))

Gene Symbol: SHISA7

NCBI Accession: NP_001138648.1

Datasheet

Version: 4.0.0

Revision date: 29 Sep 2025



KEGG: hsa:729956

String: [9606.ENSP00000365503](#)

Molecular Weight: Calculated MW: 56.2 kDa

Buffer: PBS containing 0.09% sodium azide.

Concentration: 0.5 mg/ml

Note: THIS PRODUCT IS FOR RESEARCH USE ONLY. NOT FOR USE IN DIAGNOSTIC, THERAPEUTIC OR COSMETIC PROCEDURES. NOT FOR HUMAN OR ANIMAL CONSUMPTION.

For Reference Only