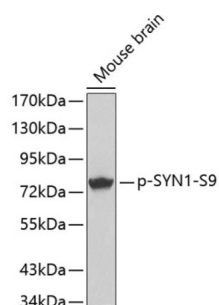


## SYN1 (pS9) Antibody

Catalogue No.: abx000296



Western blot analysis of lysates from mouse Brain tissue using Phospho-SYN1-S9 Antibody. Secondary antibody: HRP-conjugated Goat anti-Rabbit IgG (H+L) at 1/10000 dilution. Lysates/proteins: 25 µg per lane. Blocking buffer: 3% BSA.

SYN1 (pS9) Antibody is a Rabbit Polyclonal antibody against SYN1 (pS9). This gene is a member of the synapsin gene family. Synapsins encode neuronal phosphoproteins which associate with the cytoplasmic surface of synaptic vesicles. Family members are characterized by common protein domains, and they are implicated in synaptogenesis and the modulation of neurotransmitter release, suggesting a potential role in several neuropsychiatric diseases. This member of the synapsin family plays a role in regulation of axonogenesis and synaptogenesis. The protein encoded serves as a substrate for several different protein kinases and phosphorylation may function in the regulation of this protein in the nerve terminal. Mutations in this gene may be associated with X-linked disorders with primary neuronal degeneration such as Rett syndrome. Alternatively spliced transcript variants encoding different isoforms have been identified.

<b>Target:</b>	SYN1 (pS9)
<b>Clonality:</b>	Polyclonal
<b>Reactivity:</b>	Human, Mouse, Rat
<b>Tested Applications:</b>	ELISA, WB
<b>Host:</b>	Rabbit
<b>Recommended dilutions:</b>	ELISA: 1 µg/ml, WB: 1/500 - 1/2000. Optimal dilutions/concentrations should be determined by the end user.
<b>Conjugation:</b>	Unconjugated
<b>Immunogen:</b>	A synthetic phosphorylated peptide around S9 of human SYN1.
<b>Isotype:</b>	IgG
<b>Form:</b>	Liquid
<b>Purification:</b>	Purified by affinity chromatography.
<b>Storage:</b>	Aliquot and store at -20°C. Avoid repeated freeze/thaw cycles.

# Datasheet

Version: 4.0.0

Revision date: 06 Mar 2025



**UniProt Primary AC:** P17600 ([UniProt](#), [ExPASy](#))

**Gene Symbol:** SYN1

**GeneID:** [6853](#)

**NCBI Accession:** NP\_008881.2

**KEGG:** hsa:6853

**String:** [9606.ENSP00000295987](#)

**Molecular Weight:** Calculated MW: 74 kDa  
Observed MW: 74 kDa

**Buffer:** PBS, pH 7.3, containing 0.01% thimerosal, 50% glycerol.

**Concentration:** > 0.2 mg/ml

**Note:** THIS PRODUCT IS FOR RESEARCH USE ONLY. NOT FOR USE IN DIAGNOSTIC, THERAPEUTIC OR COSMETIC PROCEDURES. NOT FOR HUMAN OR ANIMAL CONSUMPTION.