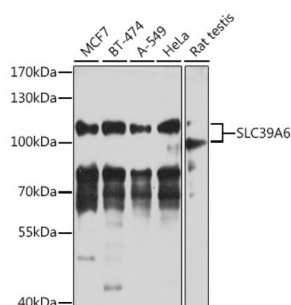


Solute Carrier Family 39, Member 6 (SLC39A6) Antibody

Catalogue No.: abx003445



Western blot analysis of various lysates using SLC39A6 Antibody at 1/1000 dilution. Secondary antibody: HRP-conjugated Goat anti-Rabbit IgG (H+L) at 1/10000 dilution. Lysates/proteins: 25 µg per lane. Blocking buffer: 3% nonfat dry milk in TBST. Exposure time: 60s.

SLC39A6 Antibody is a Rabbit Polyclonal antibody against SLC39A6. Zinc is an essential cofactor for hundreds of enzymes. It is involved in protein, nucleic acid, carbohydrate, and lipid metabolism, as well as in the control of gene transcription, growth, development, and differentiation. SLC39A6 belongs to a subfamily of proteins that show structural characteristics of zinc transporters (Taylor and Nicholson, 2003).

Target:	Solute Carrier Family 39, Member 6 (SLC39A6)
Clonality:	Polyclonal
Reactivity:	Human, Mouse, Rat
Tested Applications:	ELISA, WB
Host:	Rabbit
Recommended dilutions:	ELISA: 1 µg/ml, WB: 1/500 - 1/2000. Optimal dilutions/concentrations should be determined by the end user.
Conjugation:	Unconjugated
Immunogen:	Recombinant protein corresponding to SLC39A6. The exact sequence is proprietary.
Isotype:	IgG
Form:	Liquid
Purification:	Purified by affinity chromatography.
Storage:	Aliquot and store at -20°C. Avoid repeated freeze/thaw cycles.
UniProt Primary AC:	Q13433 (UniProt , ExPASy)
Gene Symbol:	SLC39A6

Datasheet

Version: 5.0.0

Revision date: 13 Sep 2025



GeneID: [25800](#)

NCBI Accession: NP_001092876.1

KEGG: hsa:25800

String: [9606.ENSP00000269187](#)

Molecular Weight: Calculated MW: 85 kDa
Observed MW: 102 kDa

Buffer: PBS, pH 7.3, containing 0.02% sodium azide, 50% glycerol.

Concentration: 5.05 mg/ml

Note: THIS PRODUCT IS FOR RESEARCH USE ONLY. NOT FOR USE IN DIAGNOSTIC, THERAPEUTIC OR COSMETIC PROCEDURES. NOT FOR HUMAN OR ANIMAL CONSUMPTION.

For Reference Only