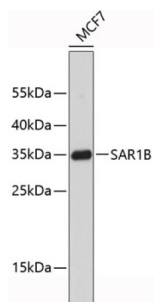


## GTP-Binding Protein SAR1b (SAR1B) Antibody

Catalogue No.: abx003558



Western blot analysis of lysates from MCF-7 cells, using SAR1B Antibody. Secondary antibody: HRP-conjugated Goat anti-Rabbit IgG (H+L) at 1/10000 dilution. Lysates/proteins: 25 µg per lane. Blocking buffer: 3% nonfat dry milk in TBST.

SAR1B Antibody is a Rabbit Polyclonal antibody against SAR1B. The protein encoded by this gene is a small GTPase that acts as a homodimer. The encoded protein is activated by the guanine nucleotide exchange factor PREB and is involved in protein transport from the endoplasmic reticulum to the Golgi. This protein is part of the COPII coat complex. Defects in this gene are a cause of chylomicron retention disease (CMRD), also known as Anderson disease (ANDD). Two transcript variants encoding the same protein have been found for this gene.

|                               |  |
|-------------------------------|--|
| <b>Target:</b>                | GTP-Binding Protein SAR1b (SAR1B)  |
| <b>Clonality:</b>             | Polyclonal   |
| <b>Reactivity:</b>            | Human  |
| <b>Tested Applications:</b>   | ELISA, WB  |
| <b>Host:</b>                  | Rabbit   |
| <b>Recommended dilutions:</b> | ELISA: 1 µg/ml, WB: 1/500 - 1/2000. Optimal dilutions/concentrations should be determined by the end user. |
| <b>Conjugation:</b>           | Unconjugated   |
| <b>Immunogen:</b>             | Recombinant fusion protein containing a sequence corresponding to amino acids 1-198 of human SAR1B.        |
| <b>Isotype:</b>               | IgG  |
| <b>Form:</b>                  | Liquid   |
| <b>Purification:</b>          | Purified by affinity chromatography.   |
| <b>Storage:</b>               | Aliquot and store at -20°C. Avoid repeated freeze/thaw cycles.   |
| <b>UniProt Primary AC:</b>    | Q9Y6B6 ( <a href="#">UniProt</a> , <a href="#">ExPASy</a> )  |

# Datasheet

Version: 4.0.0  
Revision date: 08 Aug 2025



**Gene Symbol:** SAR1B

**GeneID:** [51128](#)

**OMIM:** [246700](#)

**NCBI Accession:** NP\_057187.1

**HGNC:** 10535

**KEGG:** hsa:51128

**Ensembl:** ENSG00000152700

**String:** [9606.ENSP00000385432](#)

**Molecular Weight:** Calculated MW: 22 kDa

**Buffer:** PBS, pH 7.3, containing 0.01% thimerosal, 50% glycerol.

**Concentration:** > 0.2 mg/ml

**Note:** THIS PRODUCT IS FOR RESEARCH USE ONLY. NOT FOR USE IN DIAGNOSTIC, THERAPEUTIC OR COSMETIC PROCEDURES. NOT FOR HUMAN OR ANIMAL CONSUMPTION.