

# Histone H4 (HIST2H4A (20Me3)) Antibody

Catalogue No.: abx224216

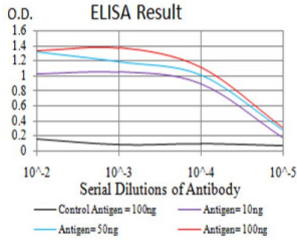
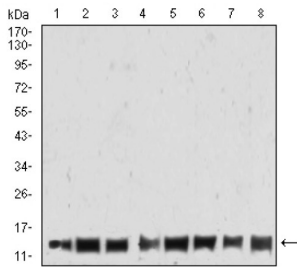
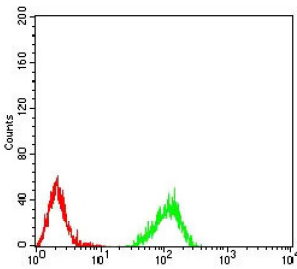


Fig. 1. Black line: Control Antigen (100 ng); Purple line: Antigen(10ng); Blue line: Antigen (50 ng); Red line: Antigen (100 ng)



HIST2H4A (20Me3) Antibody is a Mouse Monoclonal against HIST2H4A (20Me3).

**Target:** Histone H4 (HIST2H4A (20Me3))

**Clonality:** Monoclonal

**Reactivity:** Human, Mouse, Rat

**Tested Applications:** ELISA, WB, FCM

**Host:** Mouse

**Recommended dilutions:** ELISA: 1/10000, WB: 1/500 - 1/2000, FCM: 1/200 - 1/400. Optimal dilutions/concentrations should be determined by the end user.

**Immunogen:** Synthesized peptide of human HIST2H4A (AA: GGAKRHRK(Me3)VLRDNIQ).

# Datasheet

Version: 2.0.0

Revision date: 05 Sep 2025



<b>Isotype:</b>	IgG <sub>1</sub>
<b>Form:</b>	Liquid
<b>Purification:</b>	Purified from ascites by Protein G chromatography.
<b>Storage:</b>	Aliquot and store at -20°C. Avoid repeated freeze/thaw cycles.
<b>GeneID:</b>	<a href="#">8370</a>
<b>Molecular Weight:</b>	11.4 kDa
<b>Buffer:</b>	PBS, containing 0.05% sodium azide.
<b>Concentration:</b>	1 mg/ml
<b>Note:</b>	THIS PRODUCT IS FOR RESEARCH USE ONLY. NOT FOR USE IN DIAGNOSTIC, THERAPEUTIC OR COSMETIC PROCEDURES. NOT FOR HUMAN OR ANIMAL CONSUMPTION.

For Reference Only