

26S Proteasome Regulatory Subunit 6A (PSMC3) Antibody

Catalogue No.: abx224302

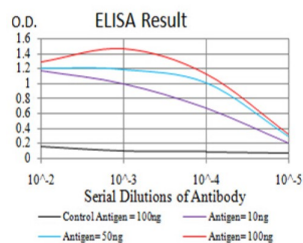
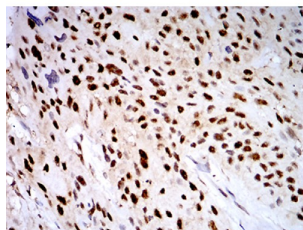
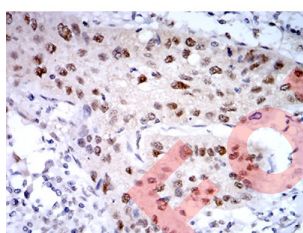
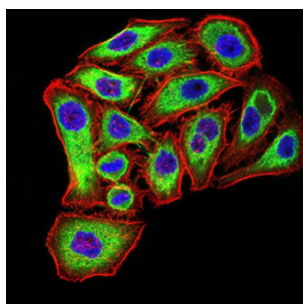
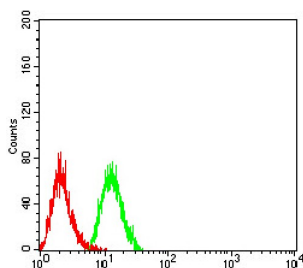


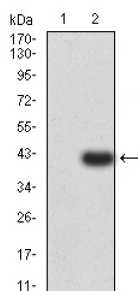
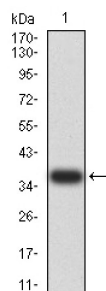
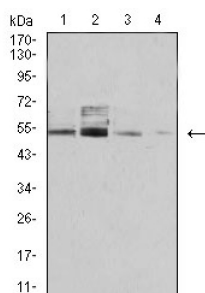
Fig. 1. Figure 1: Black line: Control Antigen (100 ng) Purple line: Antigen (10ng); Blue line: Antigen (50 ng); Red line: Antigen (100 ng)



Datasheet

Version: 3.0.0

Revision date: 19 Jul 2025



26S Proteasome Regulatory Subunit 6A (PSMC3) Antibody is a Mouse Monoclonal against 26S Proteasome Regulatory Subunit 6A (PSMC3). The 26S proteasome is a multicatalytic proteinase complex with a highly ordered structure composed of 2 complexes, a 20S core and a 19S regulator. The 20S core is composed of 4 rings of 28 non-identical subunits; 2 rings are composed of 7 alpha subunits and 2 rings are composed of 7 beta subunits. The 19S regulator is composed of a base, which contains 6 ATPase subunits and 2 non-ATPase subunits, and a lid, which contains up to 10 non-ATPase subunits. Proteasomes are distributed throughout eukaryotic cells at a high concentration and cleave peptides in an ATP/ubiquitin-dependent process in a non-lysosomal pathway. An essential function of a modified proteasome, the immunoproteasome, is the processing of class I MHC peptides. This gene encodes one of the ATPase subunits, a member of the triple-A family of ATPases that have chaperone-like activity. This subunit may compete with PSMC2 for binding to the HIV tat protein to regulate the interaction between the viral protein and the transcription complex. A pseudogene has been identified on chromosome 9.

Target: 26S Proteasome Regulatory Subunit 6A (PSMC3)

Clonality: Monoclonal

Reactivity: Human, Monkey, Rat

Tested Applications: ELISA, WB, IHC, IF/ICC, FCM

Host: Mouse

Datasheet

Version: 3.0.0
Revision date: 19 Jul 2025



Recommended dilutions: ELISA: 1/10000, WB: 1/500 - 1/2000, IHC: 1/200 - 1/1000, IF/ICC: 1/200 - 1/1000, FCM: 1/200 - 1/400. Optimal dilutions/concentrations should be determined by the end user.

Immunogen: Purified recombinant fragment of human PSMC3 (AA: 53-152) expressed in E. coli.

Isotype: IgG₁

Form: Liquid

Purification: Purified from ascites by Protein G chromatography.

Storage: Aliquot and store at -20°C. Avoid repeated freeze/thaw cycles.

UniProt Primary AC: P17980 ([UniProt](#), [ExPASy](#))

Gene Symbol: PSMC3

GeneID: [5702](#)

OMIM: [186852](#)

NCBI Accession: NM_002804

HGNC: 9549

KEGG: hsa:5702

Ensembl: ENSG00000165916

String: [9606.ENSP00000481029](#)

Molecular Weight: 49 kDa

Buffer: PBS, containing 0.05% sodium azide.

Concentration: 1 mg/ml

Note: THIS PRODUCT IS FOR RESEARCH USE ONLY. NOT FOR USE IN DIAGNOSTIC, THERAPEUTIC OR COSMETIC PROCEDURES. NOT FOR HUMAN OR ANIMAL CONSUMPTION.