

# Antiviral Innate Immune Response Receptor RIG-I (RIGI) Antibody

Catalogue No.: abx224315

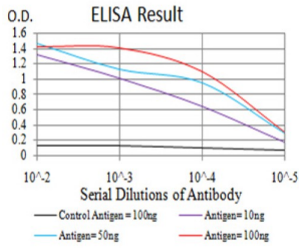
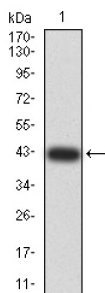
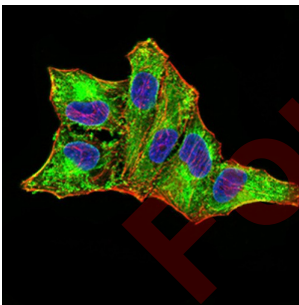
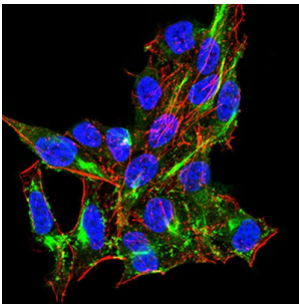
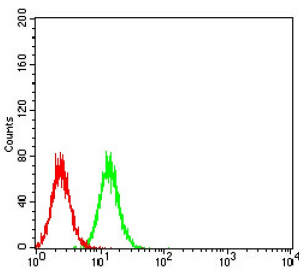
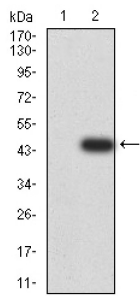


Fig. 1. Figure 1: Black line: Control Antigen (100 ng) Purple line: Antigen (10ng); Blue line: Antigen (50 ng); Red line: Antigen (100 ng)



# Datasheet

Version: 3.0.0  
Revision date: 23 Jun 2025



RIGI Antibody is a Mouse Monoclonal against RIGI.

<b>Target:</b>	Antiviral Innate Immune Response Receptor RIG-I (RIGI)
<b>Clonality:</b>	Monoclonal
<b>Reactivity:</b>	Human
<b>Tested Applications:</b>	ELISA, IF/ICC, FCM
<b>Host:</b>	Mouse
<b>Recommended dilutions:</b>	ELISA: 1/10000, IF/ICC: 1/200 - 1/1000, FCM: 1/200 - 1/400. Optimal dilutions/concentrations should be determined by the end user.
<b>Immunogen:</b>	Purified recombinant fragment of human DDX58 (AA: 789-925) expressed in E. coli.
<b>Isotype:</b>	IgM
<b>Form:</b>	Liquid
<b>Purification:</b>	Purified from ascites by Protein G chromatography.
<b>Storage:</b>	Aliquot and store at -20°C. Avoid repeated freeze/thaw cycles.
<b>UniProt Primary AC:</b>	O95786 ( <a href="#">UniProt</a> , <a href="#">ExPASy</a> )
<b>Gene Symbol:</b>	RIGI
<b>GeneID:</b>	<a href="#">23586</a>
<b>OMIM:</b>	<a href="#">609631</a>
<b>HGNC:</b>	19102

# Datasheet

Version: 3.0.0  
Revision date: 23 Jun 2025



**KEGG:** hsa:23586

**Ensembl:** ENSG00000107201

**String:** [9606.ENSP00000369213](#)

**Molecular Weight:** 106.6 kDa

**Buffer:** PBS, containing 0.05% sodium azide.

**Concentration:** 1 mg/ml

**Note:** THIS PRODUCT IS FOR RESEARCH USE ONLY. NOT FOR USE IN DIAGNOSTIC, THERAPEUTIC OR COSMETIC PROCEDURES. NOT FOR HUMAN OR ANIMAL CONSUMPTION.

For Reference Only