

Matrix Metalloproteinase 2 (MMP2) Antibody

Catalogue No.: abx224345

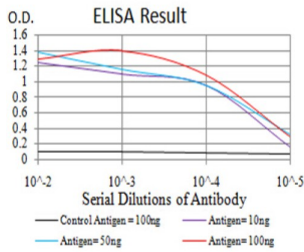
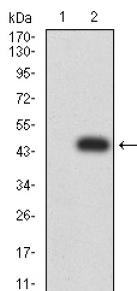
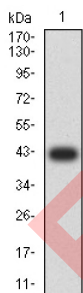
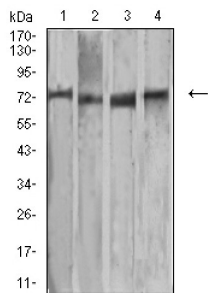
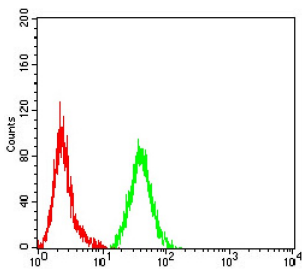


Fig. 1. Figure 1: Black line: Control Antigen (100 ng) Purple line: Antigen (10ng); Blue line: Antigen (50 ng); Red line: Antigen (100 ng)



Datasheet

Version: 3.0.0
Revision date: 06 Sep 2025



MMP2 Antibody is a Mouse Monoclonal against MMP2.

Target:	Matrix Metalloproteinase 2 (MMP2)
Clonality:	Monoclonal
Reactivity:	Human, Rat
Tested Applications:	ELISA, WB, IHC, IF/ICC, FCM
Host:	Mouse
Recommended dilutions:	ELISA: 1/10000, WB: 1/500 - 1/2000, IHC: 1/200 - 1/1000, IF/ICC: 1/200 - 1/1000, FCM: 1/200 - 1/400. Optimal dilutions/concentrations should be determined by the end user.
Immunogen:	Purified recombinant fragment of human MMP2 (AA: 9-140) expressed in E. coli.
Isotype:	IgG ₁
Form:	Liquid
Purification:	Purified from ascites by Protein G chromatography.
Storage:	Aliquot and store at -20°C. Avoid repeated freeze/thaw cycles.
GeneID:	5899
Molecular Weight:	23.4 kDa
Buffer:	PBS, containing 0.05% sodium azide.
Concentration:	1 mg/ml
Note:	THIS PRODUCT IS FOR RESEARCH USE ONLY. NOT FOR USE IN DIAGNOSTIC, THERAPEUTIC OR COSMETIC PROCEDURES. NOT FOR HUMAN OR ANIMAL CONSUMPTION.