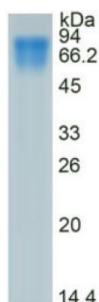


# Human Glycated Albumin Protein

Catalogue No.: abx060272



SDS-PAGE analysis of Human Glycated Albumin Protein.

Human Glycated Albumin Protein is a native Human protein.

**Target:** Glycated Albumin

**Origin:** Human

**Expression:** Native

**Tested Applications:** WB, SDS-PAGE

**Host:** Human

**Conjugation:** Unconjugated

**Form:** Lyophilized

**Purity:** > 95% (SDS-PAGE)

**Purification:** Purified by salt co-precipitation and ion-exchange chromatography.

**Reconstitution:** Reconstituting in ddH<sub>2</sub>O to a concentration of 0.1-0.5 mg/ml. Do not vortex.

**Storage:** Store at 2-8 °C for up to one month. Store at -80 °C for up to one year. Avoid repeated freeze/thaw cycles.

**UniProt Primary AC:** P02768 ([UniProt](#), [ExPASy](#))

**Gene Symbol:** ALB

**GeneID:** [213](#)

**OMIM:** [103600](#)

# Datasheet

Version: 8.0.0

Revision date: 02 Jun 2025



**KEGG:** hsa:213

**String:** [9606.ENSP00000295897](#)

**Molecular Weight:** Calculated MW: 69 kDa  
Observed MW: 60-90 kDa

**Sequence:** This product is a native protein and the sequence has not been determined.

**Buffer:** Prior to lyophilization: PBS, pH 7.4, containing 5% Trehalose.

**Activity:** Not tested

**Concentration:** Prior to lyophilization: 100 µg/ml

**Note:** THIS PRODUCT IS FOR RESEARCH USE ONLY. NOT FOR USE IN DIAGNOSTIC, THERAPEUTIC OR COSMETIC PROCEDURES. NOT FOR HUMAN OR ANIMAL CONSUMPTION.

For Reference Only