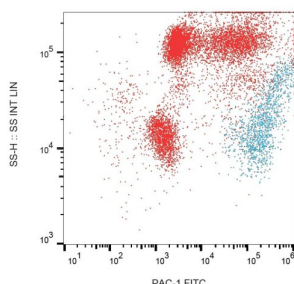


Double-Strand-Specific Pac1 Ribonuclease (PAC-1) Antibody

Catalogue No.: abx140415



Surface staining of PAC-1 on PHA-activated (1 hour) human peripheral blood with anti-PAC-1 FITC.

PAC-1 Antibody is a Mouse Monoclonal against PAC-1.

Target:	Double-Strand-Specific Pac1 Ribonuclease (PAC-1)
Clonality:	Monoclonal
Clone:	N715
Reactivity:	Human
Tested Applications:	IF/ICC, FCM, IP
Host:	Mouse
Recommended dilutions:	Optimal dilutions/concentrations should be determined by the end user.
Conjugation:	Unconjugated
Immunogen:	Human platelets.
Isotype:	IgM Kappa
Purity:	> 95% (SDS-PAGE)
Purification:	Purified by precipitation and chromatography.
Storage:	Store at 2-8°C. Do not freeze.
Buffer:	TBS solution with 15 mM sodium azide.

Datasheet

Version: 4.0.0

Revision date: 05 Sep 2025



Specificity: The mouse monoclonal antibody recognizes an activation-induced conformational epitope PAC-1 on CD41/CD61 complex (gpIIb/IIIa), also known as integrin alpha IIb beta 3, a receptor which mediates platelet aggregation.

Concentration: 1 mg/ml

Note: THIS PRODUCT IS FOR RESEARCH USE ONLY. NOT FOR USE IN DIAGNOSTIC, THERAPEUTIC OR COSMETIC PROCEDURES. NOT FOR HUMAN OR ANIMAL CONSUMPTION.

For Reference Only