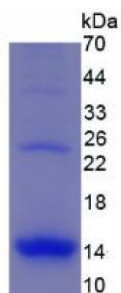
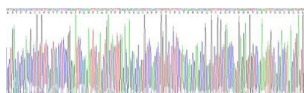


Human C-C Motif Chemokine 3 (CCL3) Protein (Active)

Catalogue No.: abx651409



Human C-C Motif Chemokine 3 (CCL3) Protein (Active)



Gene sequence extract of Human C-C Motif Chemokine 3 (CCL3) Protein (Active).

C-C Motif Chemokine 3 (CCL3) Protein (Active) is an active protein from Human.

Target: C-C Motif Chemokine 3 (CCL3)

Research Area: Immunology, Infection Immunity

Origin: Human

Tested Applications: WB, SDS-PAGE

Host: 293F cell

Conjugation: Unconjugated

Form: Lyophilized

Purity: > 95%

Reconstitution: To keep the original salt concentration, we recommend reconstituting to the original concentration prior to lyophilization (see Concentration) in ddH₂O. If a lower concentration is required, dilute in 20 mM Tris, 150 mM NaCl, pH 8.0. If a higher concentration is required, the product can be reconstituted directly in 20 mM Tris, 150 mM NaCl, pH 8.0, though please note that this will change the overall salt concentration. The stock concentration should be between 0.1-1.0 mg/ml. Do not vortex.

Datasheet

Version: 5.0.0

Revision date: 21 Jun 2025



Storage:	Store at 2-8 °C for up to one month. Store at -80 °C for up to one year. Avoid repeated freeze/thaw cycles.
UniProt Primary AC:	P10147 (UniProt , ExPASy)
Gene Symbol:	CCL3
KEGG:	hsa:6348
String:	9606.ENSP00000477908
Molecular Weight:	Calculated MW: 9.3 kDa Observed MW: 14 kDa
Sequence Fragment:	Ser24-Ala92
Tag:	N-terminal His tag
Buffer:	Prior to lyophilization: 20 mM Tris, 150 mM NaCl, pH 8.0, containing 1 mM EDTA, 1 mM DTT, 0.01% Sarcosyl, 5% Trehalose and Proclin-300.
Activity:	Active
Concentration:	Prior to lyophilization: 200 µg/ml
Note:	THIS PRODUCT IS FOR RESEARCH USE ONLY. NOT FOR USE IN DIAGNOSTIC, THERAPEUTIC OR COSMETIC PROCEDURES. NOT FOR HUMAN OR ANIMAL CONSUMPTION.