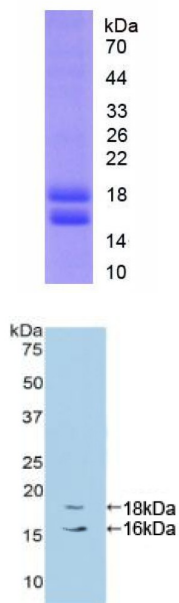


Human Cytochrome P450 1B1 (CYP1B1) Protein (Active)

Catalogue No.: abx651320



Cytochrome P450 1B1 (CYP1B1) Protein (Active) is an active protein from Human.

Target: Cytochrome P450 1B1 (CYP1B1)

Origin: Human

Tested Applications: WB, SDS-PAGE

Host: E. coli

Conjugation: Unconjugated

Form: Lyophilized

Purity: > 97%

Reconstitution: To keep the original salt concentration, we recommend reconstituting to the original concentration prior to lyophilization (see Concentration) in ddH₂O. If a lower concentration is required, dilute in 20 mM Tris, 150 mM NaCl, pH 8.0. If a higher concentration is required, the product can be reconstituted directly in 20 mM Tris, 150 mM NaCl, pH 8.0, though please note that this will change the overall salt concentration. The stock concentration should be between 0.1-1.0 mg/ml. Do not vortex.

Storage: Store at 2-8 °C for up to one month. Store at -80 °C for up to one year. Avoid repeated freeze/thaw cycles.

Datasheet

Version: 3.0.0
Revision date: 25 Jun 2025



UniProt Primary AC: Q16678 ([UniProt](#), [ExPASy](#))

KEGG: hsa:1545

String: [9606.ENSP00000478561](#)

Molecular Weight: Calculated MW: 17.6 kDa
Observed MW: 18 kDa, 16 kDa

Sequence Fragment: Asp374-Phe516

Tag: N-terminal His tag

Buffer: Prior to lyophilization: 20 mM Tris, 150 mM NaCl, pH 8.0, containing 1 mM EDTA, 1 mM DTT, 0.01% Sarcosyl, 5% Trehalose and Proclin-300.

Activity: Active

Concentration: Prior to lyophilization: 200 µg/ml

Note: THIS PRODUCT IS FOR RESEARCH USE ONLY. NOT FOR USE IN DIAGNOSTIC, THERAPEUTIC OR COSMETIC PROCEDURES. NOT FOR HUMAN OR ANIMAL CONSUMPTION.

For Reference Only