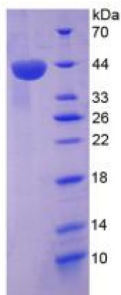


Human Stromal Cell-Derived Factor 1 / SDF1 (CXCL12) Protein (Active)

Catalogue No.: abx651444



Stromal Cell-Derived Factor 1 / SDF1 (CXCL12) Protein (Active) is an active protein from Human.

Target: Stromal Cell-Derived Factor 1 / SDF1 (CXCL12)

Origin: Human

Tested Applications: WB, SDS-PAGE

Host: E. coli

Conjugation: Unconjugated

Form: Lyophilized

Purity: > 97%

Reconstitution: To keep the original salt concentration, we recommend reconstituting to the original concentration prior to lyophilization (see Concentration) in ddH₂O. If a lower concentration is required, dilute in 20 mM Tris, 150 mM NaCl, pH 8.0. If a higher concentration is required, the product can be reconstituted directly in 20 mM Tris, 150 mM NaCl, pH 8.0, though please note that this will change the overall salt concentration. The stock concentration should be between 0.1-1.0 mg/ml. Do not vortex.

Storage: Store at 2-8 °C for up to one month. Store at -80 °C for up to one year. Avoid repeated freeze/thaw cycles.

UniProt Primary AC: P48061 ([UniProt](#), [ExPASy](#))

Gene Symbol: CXCL12

GeneID: [6387](#)

OMIM: [600835](#)

Datasheet

Version: 3.0.0

Revision date: 28 Jun 2025



HGNC: 10672

KEGG: hsa:6387

Ensembl: ENSG00000107562

String: [9606.ENSP00000379140](#)

Molecular Weight: Calculated MW: 37.8 kDa

Observed MW: 40 kDa

Sequence Fragment: Pro23-Lys89

Tag: N-terminal His tag and GST tag

Buffer: Prior to lyophilization: 20 mM Tris, 150 mM NaCl, pH 8.0, containing 1 mM EDTA, 1 mM DTT, 0.01% Sarcosyl, 5% Trehalose and Proclin-300.

Activity: Active

Concentration: Prior to lyophilization: 200 µg/ml

Note: THIS PRODUCT IS FOR RESEARCH USE ONLY. NOT FOR USE IN DIAGNOSTIC, THERAPEUTIC OR COSMETIC PROCEDURES. NOT FOR HUMAN OR ANIMAL CONSUMPTION.

For Reference Only