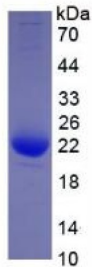
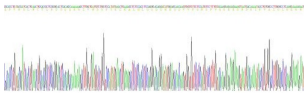


Human Interleukin-1 Beta (IL1B) Protein

Catalogue No.:abx651364



Human Interleukin-1 Beta (IL1B) Protein (Active)



Gene sequence extract of Human Interleukin-1 Beta (IL1B) Protein (Active).

Interleukin-1 Beta (IL1B) Protein (Active) is an active protein from Human.

Target:	Interleukin-1 Beta (IL1B)
Research Area:	Tumor Immunity, Infection Immunity
Origin:	Human
Expression:	Recombinant
Tested Applications:	WB, SDS-PAGE
Host:	293F cells
Conjugation:	Unconjugated
Form:	Lyophilized
Activity:	Active
Purity:	> 95%

Datasheet

Version: 4.0.0
Revision date: 07 Sep 2025



Reconstitution:	To keep the original salt concentration, we recommend reconstituting to the original concentration prior to lyophilization (see Concentration) in ddH ₂ O. If a lower concentration is required, dilute in 20 mM Tris, 150 mM NaCl, pH 8.0. If a higher concentration is required, the product can be reconstituted directly in 20 mM Tris, 150 mM NaCl, pH 8.0, though please note that this will change the overall salt concentration. The stock concentration should be between 0.1-1.0 mg/ml. Do not vortex.
Storage:	Store at 2-8°C for up to one month. For long-term storage, store at -80°C. Avoid repeated freeze/thaw cycles.
UniProt Primary AC:	P01584 (UniProt , ExPASy)
Gene Symbol:	IL1B
GeneID:	3553
KEGG:	hsa:3553
String:	9606.ENSP00000263341
Molecular Weight:	Calculated MW: 19.0 kDa Observed MW: 22 kDa
Sequence Fragment:	Ala117-Ser269
Tag:	N-terminal His tag
Buffer:	Prior to lyophilization: 20 mM Tris, 150 mM NaCl, pH 8.0, containing 1 mM EDTA, 1 mM DTT, 0.01% Sarcosyl, 5% Trehalose and Proclin-300.
Concentration:	Prior to lyophilization: 200 µg/ml
Note:	THIS PRODUCT IS FOR RESEARCH USE ONLY. NOT FOR USE IN DIAGNOSTIC, THERAPEUTIC OR COSMETIC PROCEDURES. NOT FOR HUMAN OR ANIMAL CONSUMPTION.