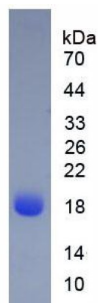


Cow Beta-Lactoglobulin (bLg) Protein

Catalogue No.: abx651578



SDS-PAGE analysis of native Cow bLg.

Cow Beta-Lactoglobulin (bLg) Protein is a Cow protein isolated from Cow's Milk.

This protein is the immunogen for the following antibodies: [abx132199](#)

Target: Beta-Lactoglobulin (bLg)

Origin: Cow

Expression: Native

Tested Applications: WB, SDS-PAGE

Host: Cow

Conjugation: Unconjugated

Form: Lyophilized

Purity: > 92% (SDS-PAGE)

Purification: Purified by salt co-precipitation and ionic-exchange chromatography.

Reconstitution: Reconstitute in ddH₂O to a concentration of 0.1-1.0 mg/ml. Do not vortex.

Storage: Store at 2-8 °C for up to one month. Store at -80 °C for up to one year. Avoid repeated freeze/thaw cycles.

UniProt Primary AC: P02754 ([UniProt](#), [ExPASy](#))

KEGG: bta:280838

String: [9913.ENSBTAP00000019538](#)

Datasheet

Version: 6.0.0

Revision date: 10 Jun 2025



Molecular Weight: Calculated MW: 18.4 kDa
Observed MW: 18 kDa

Sequence: This product is a native protein and the sequence has not been determined.

Buffer: Prior to lyophilization: 200 mM NaCl, containing 5% Trehalose.

Activity: Not tested

Concentration: Prior to lyophilization: 200 µg/ml

Note: THIS PRODUCT IS FOR RESEARCH USE ONLY. NOT FOR USE IN DIAGNOSTIC, THERAPEUTIC OR COSMETIC PROCEDURES. NOT FOR HUMAN OR ANIMAL CONSUMPTION.

For Reference Only