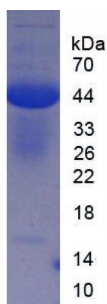


## Chicken Ovalbumin (OVA) Protein

Catalogue No.: abx651589



SDS-PAGE analysis of native Chicken OVA.

Ovalbumin (OVA) Protein is a Chicken protein isolated from Egg Whites.

This protein is the immunogen for the following antibodies: [abx132120](#)

**Target:** Ovalbumin (OVA)

**Origin:** Chicken

**Expression:** Native

**Tested Applications:** WB, SDS-PAGE

**Host:** Chicken

**Conjugation:** Unconjugated

**Form:** Lyophilized

**Purity:** > 96% (SDS-PAGE)

**Purification:** Purified by salt co-precipitation and ion-exchange chromatography.

**Reconstitution:** To keep the original salt concentration, we recommend reconstituting to the original concentration prior to lyophilization (see Concentration) in ddH<sub>2</sub>O. If a lower concentration is required, dilute in 10 mM PBS, pH 7.4. If a higher concentration is required, the product can be reconstituted directly in 10 mM PBS, pH 7.4, though please note that this will change the overall salt concentration. The stock concentration should be between 0.1-1.0 mg/ml. Do not vortex.

**Storage:** Store at 2-8 °C for up to one month. Store at -80 °C for up to one year. Avoid repeated freeze/thaw cycles.

**Molecular Weight:** Calculated MW: 43 kDa  
Observed MW (SDS-PAGE): 44 kDa

# Datasheet

Version: 6.0.0

Revision date: 01 Jun 2025



**Sequence:** This product is a native protein and the sequence has not been determined.

**Buffer:** Prior to lyophilization: PBS, pH 7.4, containing 5% Trehalose.

**CAS Number:** 9006-59-1

**Activity:** Not tested

**Concentration:** Prior to lyophilization: 200 µg/ml

**Note:** THIS PRODUCT IS FOR RESEARCH USE ONLY. NOT FOR USE IN DIAGNOSTIC, THERAPEUTIC OR COSMETIC PROCEDURES. NOT FOR HUMAN OR ANIMAL CONSUMPTION.

For Reference Only